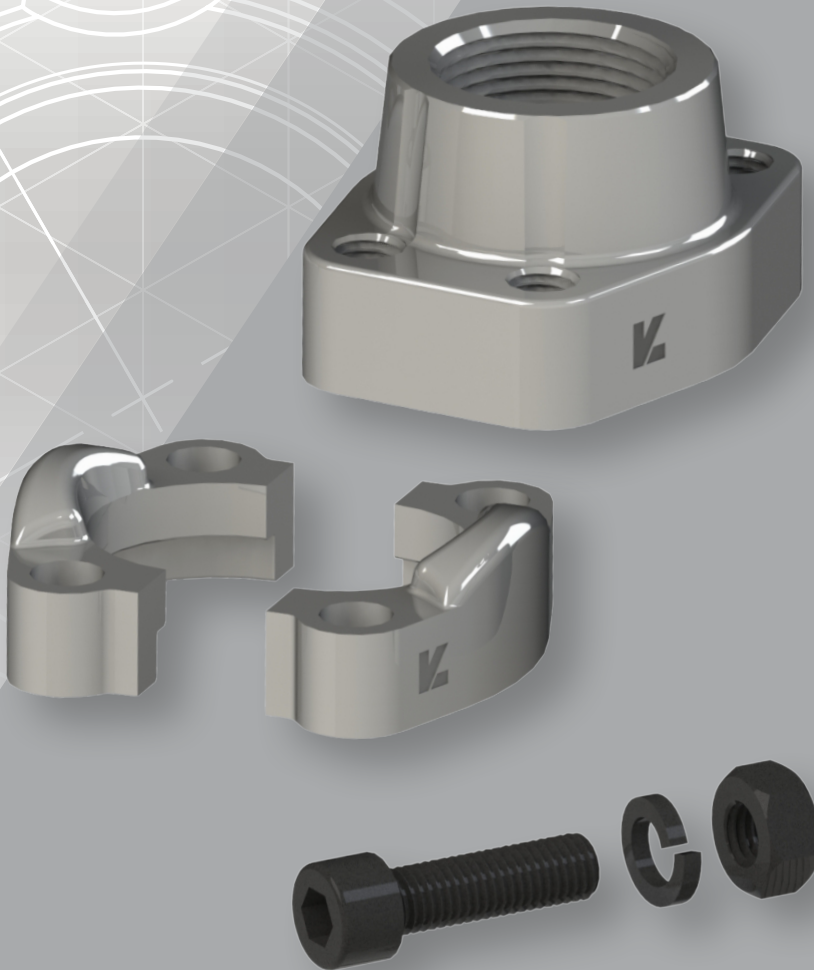




# DMH




## L K F l u i d



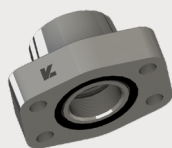
# BRIDES

[www.dmhfrance.com](http://www.dmhfrance.com)

**SOMMAIRE**

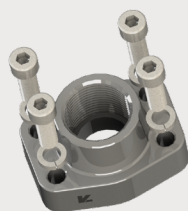
	REFERENCE	PAGE		REFERENCE	PAGE
	SOMMAIRE	<b>BR 2</b>		COLLET A SOUDER SAE 3000 & 6000 BW	<b>BR 17</b>
	INSTRUCTIONS D'ASSEMBLAGE	<b>BR 3</b>		COLLET OBTURATEUR NU SAE 3000 & 6000	<b>BR 18</b>
	CARACTERISTIQUES TECHNIQUES - BRIDE SAE	<b>BR 3</b>		PLAQUE DE COUVERTURE SAE 3000 & 6000	<b>BR 19</b>
	DEMI-BRIDE SAE 3000 & 6000	<b>BR 4</b>		PLAQUE DE MAINTIEN SAE 3000 & 6000	<b>BR 19</b>
	BRIDE MONOBLOC SAE 3000 & 6000	<b>BR 5</b>		BRIDE SAE 3000 & 6000 / PRISE DE PRESSION	<b>BR 20</b>
	CONTRE-BRIDE MONOBLOC SAE 3000 & 6000	<b>BR 6</b>		BRIDE DE POMPE MALE DIN 24° / SERIE L & S	<b>BR 21</b>
	KIT VISSERIE POUR BRIDE SAE 3000 & 6000	<b>BR 7</b>		BRIDE DE POMPE TARAUDE BSP	<b>BR 21</b>
	BRIDE SAE 3000 & 6000 TARAUDE BSP	<b>BR 8</b>		BRIDE DE POMPE 90° / MALE DIN 24° SERIE L & S	<b>BR 21</b>
	BRIDE A 90° SAE 3000 & 6000 TARAUDE BSP	<b>BR 9</b>		BRIDE DE POMPE 90° 3 TROUS MALE DIN 24° / SERIE L & S	<b>BR 22</b>
	CONTRE-BRIDE SAE 3000 & 6000 TARAUDE BSP	<b>BR 10</b>		BRIDE DE POMPE 90° TARAUDE BSP	<b>BR 22</b>
	BRIDE A SOUDER SAE 3000 & 6000 SW	<b>BR 11</b>		BRIDE DE POMPE 90° 3 TROUS TARAUDE BSP	<b>BR 22</b>
	CONTRE-BRIDE A SOUDER SAE 3000 & 6000 SW	<b>BR 12</b>		BRIDE DE POMPE 90° ALU TARAUDE BSP	<b>BR 23</b>
	BRIDE 90° A SOUDER SAE 3000 & 6000 SW	<b>BR 13</b>		BRIDE DE POMPE 90° 3 TROUS ALU TARAUDE BSP	<b>BR 23</b>
	BRIDE OBTURATRICE SAE 3000 & 6000 (AVEC GORGE)	<b>BR 14</b>		COLLET SAE 3000 & 6000 MALE JIC 74°	<b>BR 24</b>
	CONTRE-BRIDE OBTURATRICE SAE 3000 & 6000 (SANS GORGE)	<b>BR 14</b>		COLLET SAE 3000 & 6000 MALE BSPP 60°	<b>BR 24</b>
	BRIDE A SOUDER SAE 3000 & 6000 BW	<b>BR 15</b>		COLLET SAE 3000 & 6000 / MALE DIN 24° SERIE L & S	<b>BR 25</b>
	CONTRE-BRIDE A SOUDER SAE 3000 & 6000 BW	<b>BR 16</b>		COLLET 90° SAE 3000 & 6000 MALE DIN 24° / SERIE L & S	<b>BR 26</b>

## INSTRUCTIONS D'ASSEMBLAGE



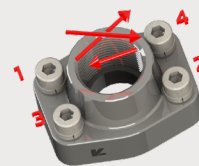
### 1.1

Vérifier l'état de la surface de contact et de la gorge. Ces derniers doivent être exempts de tout type de dommages et pollutions



### 2.1

Positionner la bride en face de sa contrepartie



### 3.1

Serrer les vis en suivant le paterne ci-dessus au couple de serrage recommandé

### 1.2

Placer le joint de bride dans la gorge

### 2.2

Assembler les vis (et autres accessoires de visseries si applicable) et pre-serrer à la main

### NOTE

Il est conseillé de serrer en plusieurs passes afin d'éviter d'endommager la bride

### EXEMPLE

Premier serrage jusque résistance sur chacune des vis en respectant le paterne conseillé puis appliquer à la 2e passe le couple recommandé, toujours en suivant le même paterne

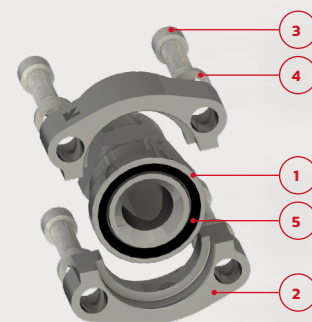
## CARACTERISTIQUES TECHNIQUES - BRIDE SAE

### 3000 PSI - ISO 6162-1

Taille	DN	C	D	G	Vis métrique	Couple (N.m)	Vis UNC	Couple (N.m)	PN (bar)
1/2"	12	30,2	25,5	6,73	M8	32	5/16"	32	350
3/4"	19	38,1	31,8	6,73	M10	70	3/8"	60	350
1"	25	44,4	39,7	8,0	M10	70	3/8"	60	320
1 1/4"	32	50,8	44,5	8,0	M10	70	3/8"	60	280
1 1/4"	32	50,8	44,5	8,0	M10	70	7/16"	92	280
1 1/2"	38	60,3	53,9	8,0	M12	130	1/2"	150	210
2"	50	71,4	63,4	9,6	M12	130	1/2"	150	210
2 1/2"	64	84,1	76,2	9,6	M12	130	1/2"	150	175
3"	76	101,6	92,0	9,6	M16	295	5/8"	295	160
3 1/2"	89	114,3	104,3	11,3	M16	295	5/8"	295	35
4"	102	127,0	117,0	11,3	M16	295	5/8"	295	35
5"	127	152,4	142,3	11,3	M16	295	5/8"	295	35

### 6000 PSI - ISO 6162-2

Taille	DN	C	D	G	Vis métrique	Couple (N/M)	Vis UNC	Couple (N/M)	PN (bar)
1/2"	12	31,8	25,5	7,8	M8	32	5/16"	32	420
3/4"	19	41,3	31,8	8,8	M10	70	3/8"	60	420
1"	25	47,7	39,7	9,5	M12	130	7/16"	92	420
1 1/4"	32	54,0	44,5	10,3	M12	130	1/2"	150	420
1 1/4"	32	54,0	44,5	10,3	M14	180	-	-	420
1 1/2"	38	63,5	53,9	12,6	M16	295	5/8"	295	420
2"	50	79,4	63,4	12,6	M20	550	3/4"	450	420
2 1/2"	64	107,7	76,2	20,5	M24	550	-	-	420
3"	76	131,7	92,0	26,0	M30	650	-	-	420



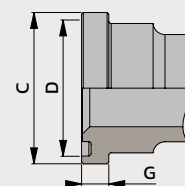
1 COLLET 3000 ou 6000 PSI

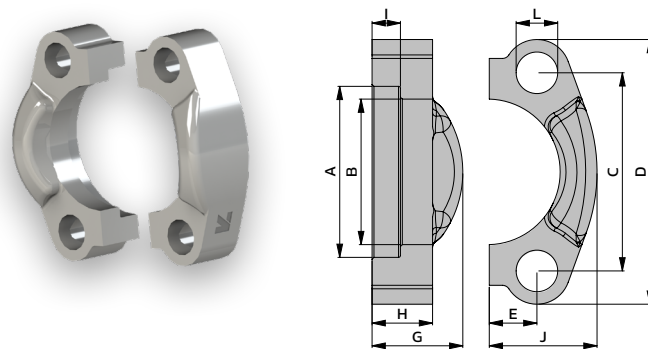
2 DEMI-BRIDE 3000 ou 6000 PSI

3 VIS METRIQUE ou UNC

4 RONDELLE

5 JOINT DE BRIDE (se référer à notre catalogue JOINT)



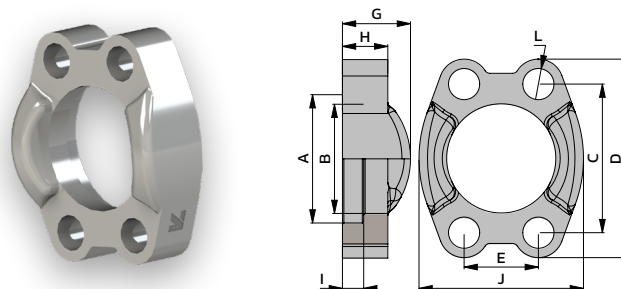
**DEMI-BRIDE SAE 3000 & 6000**

**3000 PSI - ISO 6162-1**

Référence	Taille	A	B	C	D	E	G	H	I	J	L	PN (bar)
BA-DB308	1/2"	31,0	24,3	38,1	54,0	8,8	19,0	13,0	6,2	23,0	8,5	350
BA-DB312	3/4"	38,9	32,2	47,6	65,0	11,2	22,0	14,0	6,2	26,0	10,5	350
BA-DB316	1"	45,3	38,5	52,4	70,0	13,1	24,0	16,0	7,5	29,0	10,5	320
BA-DB320	1 1/4"	51,6	43,7	58,7	79,0	15,1	22,0	14,0	7,5	37,0	10,5	280
BA-DB320-12	1 1/4"	51,6	43,7	58,7	79,0	15,1	22,0	14,0	7,5	37,0	12,0	280
BA-DB324	1 1/2"	61,1	50,8	69,9	94,0	17,9	25,0	16,0	7,5	41,0	13,3	210
BA-DB332	2"	72,3	62,8	77,8	102,0	21,5	26,0	16,0	9,0	49,0	13,3	210
BA-DB340	2 1/2"	84,9	74,9	88,9	114,0	25,4	38,0	19,0	9,0	54,0	13,3	175
BA-DB348	3"	102,4	90,9	106,4	135,0	31,0	41,0	22,0	9,0	66,0	17,0	160
BA-DB356	3 1/2"	115,1	102,4	120,7	152,0	35,0	28,0	22,0	10,7	70,0	17,0	35
BA-DB364	4"	127,8	115,0	130,2	162,0	38,9	35,0	25,0	10,7	76,0	17,0	35
BA-DB380	5"	153,2	140,5	152,4	184,0	46,1	41,0	28,0	10,7	90,0	17,0	35

**6000 PSI - ISO 6162-2**

Référence	Taille	A	B	C	D	E	G	H	I	J	L	PN (bar)
BA-DB608	1/2"	32,5	24,6	40,5	56,0	9,1	22,0	16,0	7,2	24,0	8,5	420
BA-DB612	3/4"	42,0	32,5	50,8	71,0	11,9	28,0	19,0	8,2	30,0	10,5	420
BA-DB616	1"	48,4	38,8	57,2	81,0	13,9	33,0	24,0	9,0	35,0	13,3	420
BA-DB620	1 1/4"	54,8	44,5	66,6	95,0	15,9	38,0	27,0	9,8	39,0	13,3	420
BA-DB620-15	1 1/4"	54,8	44,5	66,6	95,0	15,9	38,0	27,0	9,8	39,0	14,6	420
BA-DB624	1 1/2"	64,3	51,6	79,3	113,0	18,3	43,0	30,0	12,0	48,0	16,8	420
BA-DB632	2"	80,2	67,6	96,8	133,0	22,3	52,0	37,0	12,0	57,0	21,0	420
BA-DB640	2 1/2"	108,5	89,5	123,8	175,7	28,4	-	48,0	20,0	73,0	25,0	420
BA-DB648	3"	132,5	114,5	152,4	212,0	34,7	-	58,0	25,0	87,0	31,0	420

## BRIDE MONOBLOC SAE 3000 & 6000

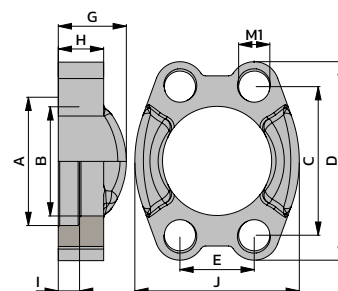
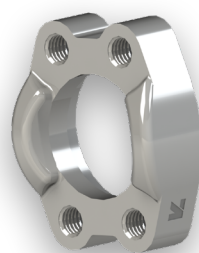


### 3000 PSI - ISO 6162-1

Référence	Taille	A	B	C	D	E	G	H	I	J	L	PN (bar)
BA-BM308	1/2"	31,0	24,3	38,1	54,0	17,5	19,0	13,0	6,2	46,0	8,5	350
BA-BM312	3/4"	38,9	32,2	47,6	65,0	22,3	22,0	14,0	6,2	52,0	10,5	350
BA-BM316	1"	45,3	38,5	52,4	70,0	26,2	24,0	16,0	7,5	59,0	10,5	320
BA-BM320	1 1/4"	51,6	43,7	58,7	79,0	30,2	22,0	14,0	7,5	73,0	10,5	280
BA-BM320-12	1 1/4"	51,6	43,7	58,7	79,0	30,2	22,0	14,0	7,5	73,0	12,0	280
BA-BM324	1 1/2"	61,1	50,8	69,9	94,0	35,7	25,0	16,0	7,5	83,0	13,3	210
BA-BM332	2"	72,3	62,8	77,8	102,0	42,9	26,0	16,0	9,0	97,0	13,3	210
BA-BM340	2 1/2"	84,9	74,9	88,9	114,0	50,8	38,0	19,0	9,0	109,0	13,3	175
BA-BM348	3"	102,4	90,9	106,4	135,0	61,9	41,0	22,0	9,0	131,0	17,0	160
BA-BM356	3 1/2"	115,1	102,4	120,7	152,0	69,9	28,0	22,0	10,7	140,0	17,0	35
BA-BM364	4"	127,8	115,0	130,2	162,0	77,8	35,0	25,0	10,7	152,0	17,0	35
BA-BM380	5"	153,2	140,5	152,4	184,0	92,1	41,0	28,0	10,7	181,0	17,0	35

### 6000 PSI - ISO 6162-2

Référence	Taille	A	B	C	D	E	G	H	I	J	L	PN (bar)
BA-BM608	1/2"	32,5	24,6	40,5	56,0	18,2	22,0	16,0	7,2	48,0	8,5	420
BA-BM612	3/4"	42,0	32,5	50,8	71,0	23,8	28,0	19,0	8,2	60,0	10,5	420
BA-BM616	1"	48,4	38,8	57,2	81,0	27,8	33,0	24,0	9,0	70,0	13,3	420
BA-BM620	1 1/4"	54,8	44,5	66,6	95,0	31,8	38,0	27,0	9,8	78,0	13,3	420
BA-BM620-15	1 1/4"	54,8	44,5	66,6	95,0	31,8	38,0	27,0	9,8	78,0	14,6	420
BA-BM624	1 1/2"	64,3	51,6	79,3	113,0	36,5	43,0	30,0	12,0	95,0	16,8	420
BA-BM632	2"	80,2	67,6	96,8	133,0	44,5	52,0	37,0	12,0	114,0	21,0	420
BA-BM640	2 1/2"	108,9	90,5	123,8	180,0	58,8	-	45,0	20,5	152,0	26,0	420
BA-BM648	3"	132,5	115,5	152,4	215,0	71,6	-	55,0	25,5	198,0	32,0	420

**CONTRE-BRIDE MONOBLOC SAE 3000 & 6000**

**3000 PSI - ISO 6162-1**

Référence	Taille	M1	A	B	C	D	E	G	H	I	J	PN (bar)
BA-BMG308	1/2"	M8	31,0	24,3	38,1	54,0	17,5	19,0	13,0	6,2	46,0	350
BA-BMG312	3/4"	M10	38,9	32,2	47,6	65,0	22,3	22,0	14,0	6,2	52,0	350
BA-BMG316	1"	M10	45,3	38,5	52,4	70,0	26,2	24,0	16,0	7,5	59,0	320
BA-BMG320	1"1/4	M10	51,6	43,7	58,7	79,0	30,2	22,0	14,0	7,5	73,0	280
BA-BMG324	1"1/2	M12	61,1	50,8	69,9	94,0	35,7	25,0	16,0	7,5	83,0	210
BA-BMG332	2"	M12	72,3	62,8	77,8	102,0	42,9	26,0	16,0	9,0	97,0	210
BA-BMG340	2"1/2	M12	84,9	74,9	88,9	114,0	50,8	38,0	19,0	9,0	109,0	175
BA-BMG348	3"	M16	102,4	90,9	106,4	135,0	61,9	41,0	22,0	9,0	131,0	160

**6000 PSI - ISO 6162-2**

Référence	Taille	M1	A	B	C	D	E	G	H	I	J	PN (bar)
BA-BMG608	1/2"	M8	32,5	24,6	40,5	56,0	18,2	22,0	16,0	7,2	48,0	420
BA-BMG612	3/4"	M10	42,0	32,5	50,8	71,0	23,8	28,0	19,0	8,2	60,0	420
BA-BMG616	1"	M12	48,4	38,8	57,2	81,0	27,8	33,0	24,0	9,0	70,0	420
BA-BMG620	1"1/4	M14	54,8	44,5	66,6	95,0	31,8	38,0	27,0	9,8	78,0	420
BA-BMG624	1"1/2	M16	64,3	51,6	79,3	113,0	36,5	43,0	30,0	12,0	95,0	420
BA-BMG632	2"	M20	80,2	67,6	96,8	133,0	44,5	52,0	37,0	12,0	114,0	420

**KIT VISSERIE POUR BRIDE SAE 3000 & 6000**

**3000 PSI - ISO 6162-1**
*VISSERIE METRIQUE (JOINT TORIQUE COMPRIS)*

Référence	D	Pour bride	L	D1	D2	H min	H max	S
BA-KITBFX308	M8	1/2"	30	8,2	12,8	3,40	4,60	2,0
BA-KITBFX312	M10	3/4"	35	10,2	16,1	4,25	5,75	2,5
BA-KITBFX316	M10	1"	35	10,2	16,1	4,25	5,75	2,5
BA-KITBFX320	M10	1 1/4"	35	10,2	16,1	4,25	5,75	2,5
BA-KITBFX324	M12	1 1/2"	45	12,2	18,3	4,25	5,75	2,5
BA-KITBFX332	M12	2"	45	12,2	18,3	4,25	5,75	2,5
BA-KITBFX340	M12	2 1/2"	45	12,2	18,3	4,25	5,75	2,5
BA-KITBFX348	M16	3"	50	16,2	24,6	5,95	8,05	3,5
BA-KITBFX356	M16	3 1/2"	50	16,2	24,6	5,95	8,05	3,5
BA-KITBFX364	M16	4"	50	16,2	24,6	5,95	8,05	3,5
BA-KITBFX380	M16	5"	55	16,2	24,6	5,95	8,05	3,5

*VISSERIE UNC (JOINT TORIQUE COMPRIS)*

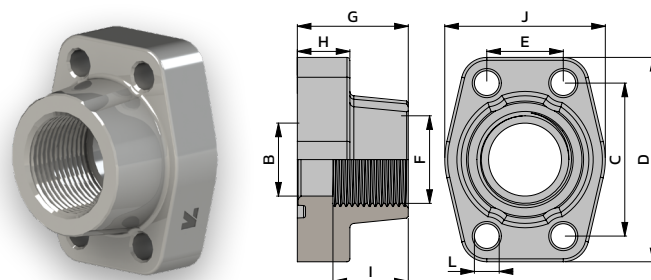
Référence	D	Pour bride	L	D1	D2	H min	H max	S
BA-KITBFX308U	5/16"	1/2"	32	8,2	12,8	3,40	4,60	2,0
BA-KITBFX312U	3/8"	3/4"	32	10,2	16,1	4,25	5,75	2,5
BA-KITBFX316U	3/8"	1"	32	10,2	16,1	4,25	5,75	2,5
BA-KITBFX320U	7/16"	1 1/4"	38	10,2	16,1	4,25	5,75	2,5
BA-KITBFX324U	1/2"	1 1/2"	38	12,2	18,3	4,25	5,75	2,5
BA-KITBFX332U	1/2"	2"	38	12,2	18,3	4,25	5,75	2,5
BA-KITBFX340U	1/2"	2 1/2"	44	12,2	18,3	4,25	5,75	2,5
BA-KITBFX348U	5/8"	3"	50	16,2	24,6	5,95	8,05	3,5
BA-KITBFX356U	5/8"	3 1/2"	50	16,2	24,6	5,95	8,05	3,5
BA-KITBFX364U	5/8"	4"	50	16,2	24,6	5,95	8,05	3,5
BA-KITBFX380U	5/8"	5"	50	16,2	24,6	5,95	8,05	3,5

**6000 PSI - ISO 6162-2**
*VISSERIE METRIQUE (JOINT TORIQUE COMPRIS)*

Référence	D	Pour bride	L	D1	D2	H min	H max	S
BA-KITBFX608	M8	1/2"	30	8,2	12,8	3,40	4,60	2,0
BA-KITBFX612	M10	3/4"	35	10,2	16,1	4,25	5,75	2,5
BA-KITBFX616	M12	1"	45	12,2	18,3	4,25	5,75	2,5
BA-KITBFX620	M14	1 1/4"	50	14,2	21,4	5,10	6,90	3,0
BA-KITBFX624	M16	1 1/2"	55	16,2	24,6	5,95	8,05	3,5
BA-KITBFX632	M20	2"	70	20,2	30,6	7,65	10,35	4,5
BA-KITBFX640	M24	2 1/2"	80	24,5	35,9	8,50	11,50	5,0
BA-KITBFX648	M30	3"	90	30,5	44,2	10,20	13,80	6,0

*VISSERIE UNC (JOINT TORIQUE COMPRIS)*

Référence	D	Pour bride	L	D1	D2	H min	H max	S
BA-KITBFX608U	5/16"	1/2"	32	8,2	12,8	3,40	4,60	2,0
BA-KITBFX612U	3/8"	3/4"	38	10,2	16,1	4,25	5,75	2,5
BA-KITBFX616U	7/16"	1"	44	12,2	18,3	4,25	5,75	2,5
BA-KITBFX620U	1/2"	1 1/4"	44	14,2	21,4	5,10	6,90	3,0
BA-KITBFX624U	5/8"	1 1/2"	50	16,2	24,6	5,95	8,05	3,5
BA-KITBFX632U	3/4"	2"	63	20,2	30,6	7,65	10,35	4,5

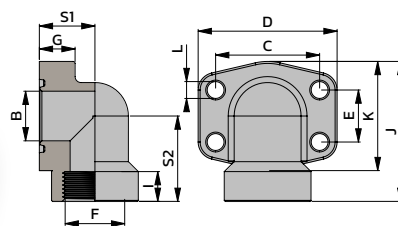
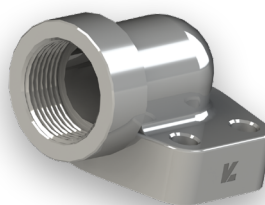
**BRIDE SAE 3000 & 6000 TARAUDE BSP**

**3000 PSI - ISO 6162-1**

Référence	Taille	F	B	C	D	E	G	H	I	J	L	PN (bar)
BA-BFX308G06	1/2"	3/8"	13,0	38,1	54,0	17,5	36,0	16,0	19,0	46,0	9,0	350
BA-BFX308G	1/2"	1/2"	13,0	38,1	54,0	17,5	36,0	16,0	19,0	46,0	9,0	350
BA-BFX312G08	3/4"	1/2"	13,0	47,6	65,0	22,3	36,0	18,0	19,0	50,0	11,0	350
BA-BFX312G	3/4"	3/4"	19,0	47,6	65,0	22,3	36,0	18,0	19,0	50,0	11,0	350
BA-BFX316G12	1"	3/4"	19,0	52,4	70,0	26,2	38,0	18,0	19,0	55,0	11,0	320
BA-BFX316G	1"	1"	25,0	52,4	70,0	26,2	38,0	18,0	19,0	55,0	11,0	320
BA-BFX320G16	1 1/4"	1"	25,0	58,7	81,0	30,2	42,0	25,0	22,0	65,0	11,5	280
BA-BFX320G	1 1/4"	1 1/4"	32,0	58,7	79,0	30,2	41,0	21,0	22,0	68,0	11,5	280
BA-BFX324G20	1 1/2"	1 1/4"	32,0	69,9	95,0	35,7	45,0	27,0	24,0	78,0	13,5	210
BA-BFX324G	1 1/2"	1 1/2"	38,0	69,9	93,0	35,7	45,0	25,0	24,0	78,0	13,5	210
BA-BFX332G24	2"	1 1/2"	38,0	77,8	102,0	42,9	45,0	25,0	26,0	90,0	13,5	210
BA-BFX332G	2"	2"	51,0	77,8	102,0	42,9	45,0	25,0	30,0	90,0	13,5	210
BA-BFX340G32	2 1/2"	2"	51,0	88,9	114,0	50,8	50,0	25,0	30,0	105,0	13,5	175
BA-BFX340G	2 1/2"	2 1/2"	63,0	88,9	114,0	50,8	50,0	25,0	30,0	105,0	13,5	175
BA-BFX348G40	3"	2 1/2"	63,0	106,4	134,0	61,9	50,0	27,0	30,0	124,0	17,5	160
BA-BFX348G	3"	3"	73,0	106,4	134,0	61,9	50,0	27,0	34,0	124,0	17,5	160

**6000 PSI - ISO 6162-2**

Référence	Taille	F	B	C	D	E	G	H	I	J	L	PN (bar)
BA-BFX608G06	1/2"	3/8"	13,0	40,5	54,0	18,2	36,0	16,0	19,0	46,0	9,0	420
BA-BFX608G	1/2"	1/2"	13,0	40,5	54,0	18,2	36,0	16,0	19,0	46,0	9,0	420
BA-BFX612G08	3/4"	1/2"	13,0	50,8	71,0	23,8	35,0	21,0	22,0	55,0	11,0	420
BA-BFX612G	3/4"	3/4"	19,0	50,8	71,0	23,8	35,0	21,0	22,0	55,0	11,0	420
BA-BFX616G12	1"	3/4"	19,0	57,2	81,0	27,8	42,0	25,0	24,0	65,0	13,5	420
BA-BFX616G	1"	1"	25,0	57,2	81,0	27,8	42,0	25,0	24,0	65,0	13,5	420
BA-BFX620G16	1 1/4"	1"	25,0	66,6	95,0	31,8	45,0	27,0	25,0	78,0	13,5	420
BA-BFX620G16-15	1 1/4"	1"	25,0	66,6	95,4	31,8	45,0	27,0	24,0	77,7	15,0	420
BA-BFX620G	1 1/4"	1 1/4"	32,0	66,6	95,0	31,8	45,0	27,0	25,0	78,0	13,5	420
BA-BFX620G-15	1 1/4"	1 1/4"	32,0	66,6	95,4	31,8	44,0	27,0	26,5	79,0	15,0	420
BA-BFX624G20	1 1/2"	1 1/4"	32,0	79,3	112,0	36,5	50,0	30,0	28,0	94,0	17,0	420
BA-BFX624G	1 1/2"	1 1/2"	38,0	79,3	112,0	36,5	50,0	30,0	28,0	94,0	17,0	420
BA-BFX632G24	2"	1 1/2"	38,0	96,8	134,0	44,5	65,0	37,0	30,0	114,0	21,0	420
BA-BFX632G	2"	2"	51,0	96,8	134,0	44,5	65,0	37,0	30,0	114,0	21,0	420

**BRIDE A 90° SAE 3000 & 6000 TARAUDE BSP**

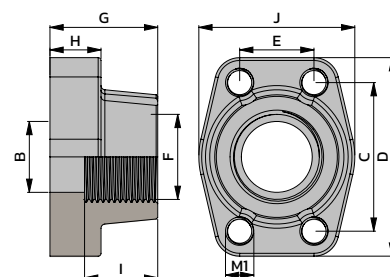
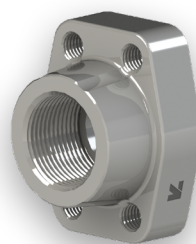


**3000 PSI - ISO 6162-1**

Référence	Taille	F	B	C	D	E	G	I	J	K	L	S1	S2	PN (bar)
BA-BFX30890G	1/2"	1/2"	13,0	38,1	54,0	17,5	16,0	19,0	60,0	48,0	9,0	20,0	37,0	350
BA-BFX31290G	3/4"	3/4"	19,0	47,6	65,0	22,3	18,0	19,0	63,0	52,0	11,0	24,0	38,0	350
BA-BFX31690G	1"	1"	22,0	52,4	70,0	26,2	19,0	20,0	71,0	51,0	11,0	28,0	43,0	320
BA-BFX32090G	1"1/4	1"1/4	32,0	58,7	79,0	30,2	21,0	22,0	85,0	73,0	11,5	34,0	51,0	280
BA-BFX32490G	1"1/2	1"1/2	38,0	69,9	93,0	35,7	25,0	25,0	95,0	83,0	13,5	38,0	56,0	210
BA-BFX33290G	2"	2"	51,0	77,8	110,0	42,9	25,0	28,0	110,0	94,0	13,5	42,0	65,0	210
BA-BFX34090G	2"1/2	2"1/2	63,0	88,9	115,0	50,8	25,0	30,0	127,0	96,0	13,5	50,0	77,0	175

**6000 PSI - ISO 6162-2**

Référence	Taille	F	B	C	D	E	G	I	J	K	L	S1	S2	PN (bar)
BA-BFX60890G	1/2"	1/2"	13,0	40,5	54,0	18,2	16,0	19,0	60,0	46,0	9,0	20,0	37,0	420
BA-BFX61290G	3/4"	3/4"	19,0	50,8	70,0	23,8	19,0	20,0	70,0	56,0	11,0	28,0	43,0	420
BA-BFX61690G	1"	1"	25,0	57,2	79,0	27,8	21,0	22,0	85,0	72,0	13,0	34,0	51,0	420
BA-BFX62090G	1"1/4	1"1/4	32,0	66,6	93,0	31,8	25,0	25,0	95,0	75,0	15,0	38,0	56,0	420
BA-BFX62490G	1"1/2	1"1/2	38,0	79,3	110,0	36,5	25,0	28,0	110,0	94,0	17,0	42,0	65,0	420
BA-BFX63290G	2"	2"	51,0	96,8	134,0	44,5	35,0	33,0	132,0	107,0	21,0	45,0	75,0	420

**CONTRE-BRIDE SAE 3000 & 6000 TARAUDE BSP**

**3000 PSI - ISO 6162-1**

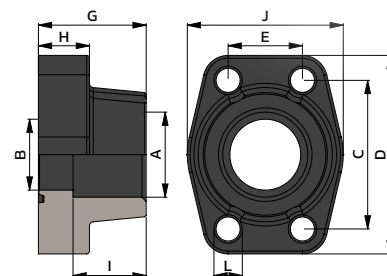
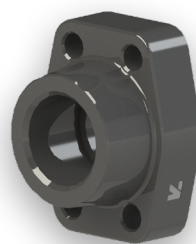
Référence	Taille	F	M1	B	C	D	E	G	H	I	J	PN (bar)
BA-BAS308G06	1/2"	3/8"	M8	13,0	38,1	54,0	17,5	36,0	16,0	19,0	46,0	350
BA-BAS308G	1/2"	1/2"	M8	13,0	38,1	54,0	17,5	36,0	16,0	19,0	46,0	350
BA-BAS312G08	3/4"	1/2"	M10	13,0	47,6	65,0	22,3	36,0	18,0	19,0	50,0	350
BA-BAS312G	3/4"	3/4"	M10	19,0	47,6	65,0	22,3	36,0	18,0	19,0	50,0	350
BA-BAS316G12	1"	3/4"	M10	19,0	52,4	70,0	26,2	38,0	18,0	19,0	55,0	320
BA-BAS316G	1"	1"	M10	25,0	52,4	70,0	26,2	38,0	18,0	19,0	55,0	320
BA-BAS320G16	1"1/4	1"	M10	25,0	58,7	81,0	30,2	42,0	25,0	22,0	65,0	280
BA-BAS320G	1"1/4	1"1/4	M10	32,0	58,7	79,0	30,2	41,0	21,0	22,0	68,0	280
BA-BAS324G20	1"1/2	1"1/4	M12	32,0	69,9	95,0	35,7	45,0	27,0	24,0	78,0	210
BA-BAS324G	1"1/2	1"1/2	M12	38,0	69,9	93,0	35,7	45,0	25,0	24,0	78,0	210
BA-BAS332G24	2"	1"1/2	M12	38,0	77,8	102,0	42,9	45,0	25,0	26,0	90,0	210
BA-BAS332G	2"	2"	M12	51,0	77,8	102,0	42,9	45,0	25,0	30,0	90,0	210
BA-BAS340G32	2"1/2	2"	M12	51,0	88,9	114,0	50,8	50,0	25,0	30,0	105,0	175
BA-BAS340G	2"1/2	2"1/2	M12	63,0	88,9	114,0	50,8	50,0	25,0	30,0	105,0	175

**6000 PSI - ISO 6162-2**

Référence	Taille	F	M1	B	C	D	E	G	H	I	J	PN (bar)
BA-BAS608G	1/2"	1/2"	M8	13,0	40,5	54,0	18,2	36,0	16,0	19,0	46,0	420
BA-BAS612G08	3/4"	1/2"	M10	13,0	50,8	71,0	23,8	35,0	21,0	22,0	55,0	420
BA-BAS612G	3/4"	3/4"	M10	19,0	50,8	71,0	23,8	35,0	21,0	22,0	55,0	420
BA-BAS616G12	1"	3/4"	M12	19,0	57,2	81,0	27,8	42,0	25,0	24,0	65,0	420
BA-BAS616G	1"	1"	M12	25,0	57,2	81,0	27,8	42,0	25,0	24,0	65,0	420
BA-BAS620G16	1"1/4	1"	M14	25,0	66,6	95,0	31,8	45,0	27,0	25,0	78,0	420
BA-BAS620G	1"1/4	1"1/4	M14	32,0	66,6	95,0	31,8	45,0	27,0	25,0	78,0	420
BA-BAS624G20	1"1/2	1"1/4	M16	32,0	79,3	112,0	36,5	50,0	30,0	28,0	94,0	420
BA-BAS624G	1"1/2	1"1/2	M16	38,0	79,3	112,0	36,5	50,0	30,0	28,0	94,0	420
BA-BAS632G24	2"	1"1/2	M20	38,0	96,8	134,0	44,5	65,0	37,0	30,0	114,0	420
BA-BAS632G	2"	2"	M20	51,0	96,8	134,0	44,5	65,0	37,0	30,0	114,0	420

**BRIDE A SOUDER SAE 3000 & 6000 SW**

**BLACK OXYDE**



**3000 PSI - ISO 6162-1**

*TUBE POUCE*

Référence	Taille	A	B	C	D	E	G	H	I	J	L	PN (bar)
BA-BFX308SW	1/2"	21,6	13,0	38,1	54,0	17,5	36,0	16,0	19,0	46,0	9,0	350
BA-BFX312SW	3/4"	27,2	19,0	47,6	65,0	22,3	36,0	18,0	19,0	50,0	11,0	350
BA-BFX316SW	1"	34,0	25,0	52,4	70,0	26,2	38,0	18,0	19,0	55,0	11,0	320
BA-BFX320SW	1 1/4"	42,8	32,0	58,7	79,0	30,2	41,0	21,0	22,0	68,0	11,5	280
BA-BFX324SW	1 1/2"	48,6	38,0	69,9	93,0	35,7	45,0	25,0	24,0	78,0	13,5	210
BA-BFX332SW	2"	61,0	51,0	77,8	102,0	42,9	45,0	25,0	30,0	90,0	13,5	210

*TUBE METRIQUE*

Référence	Taille	A	B	C	D	E	G	H	I	J	L	PN (bar)
BA-BFX308S20SW	1/2"	20,3	13,0	38,1	54,0	17,5	36,0	16,0	19,0	46,0	9,0	350
BA-BFX312S25SW	3/4"	25,3	19,0	47,6	65,0	22,3	36,0	18,0	19,0	50,0	11,0	350
BA-BFX316S30SW	1"	30,3	25,0	52,4	70,0	26,2	38,0	18,0	19,0	55,0	11,0	320
BA-BFX320S38SW	1 1/4"	38,3	32,0	58,7	79,0	30,2	41,0	21,0	22,0	68,0	11,5	280
BA-BFX324S50SW	1 1/2"	50,5	38,0	69,9	93,0	35,7	45,0	25,0	24,0	78,0	13,5	210

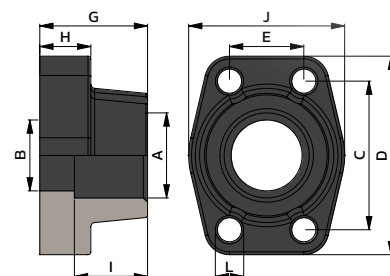
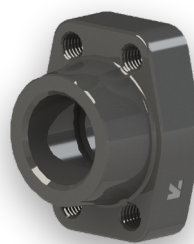
**6000 PSI - ISO 6162-2**

*TUBE POUCE*

Référence	Taille	A	B	C	D	E	G	H	I	J	L	PN (bar)
BA-BFX608SW	1/2"	21,6	13,0	40,5	54,0	18,2	36,0	16,0	19,0	46,0	9,0	420
BA-BFX612SW	3/4"	27,2	19,0	50,8	71,0	23,8	35,0	21,0	22,0	55,0	11,0	420
BA-BFX616SW	1"	34,0	25,0	57,2	81,0	27,8	42,0	25,0	22,0	65,0	13,0	420
BA-BFX620SW	1 1/4"	42,8	32,0	66,6	95,0	31,8	45,0	27,0	25,0	78,0	15,0	420
BA-BFX624SW	1 1/2"	48,6	38,0	79,3	112,0	36,5	50,0	30,0	28,0	94,0	17,5	420
BA-BFX632SW	2"	61,0	51,0	96,8	134,0	44,5	65,0	37,0	24,0	114,0	21,0	420

*TUBE METRIQUE*

Référence	Taille	A	B	C	D	E	G	H	I	J	L	PN (bar)
BA-BFX608S20SW	1/2"	20,3	13,0	40,5	54,0	18,2	36,0	16,0	19,0	46,0	9,0	420
BA-BFX612S25SW	3/4"	25,3	19,0	50,8	71,0	23,8	35,0	21,0	22,0	55,0	11,0	420
BA-BFX616S30SW	1"	30,3	25,0	57,2	81,0	27,8	42,0	25,0	22,0	65,0	13,0	420
BA-BFX620S38SW	1 1/4"	38,3	32,0	66,6	95,0	31,8	45,0	27,0	25,0	78,0	15,0	420
BA-BFX624S50SW	1 1/2"	50,5	38,0	79,3	112,0	36,5	50,0	30,0	28,0	94,0	17,5	420

**CONTRE-BRIDE A SOUDER SAE 3000 & 6000 SW**
**BLACK  
OXYDE**

**3000 PSI - ISO 6162-1**
*TUBE POUCE*

Référence	Taille	M1	A	B	C	D	E	G	H	I	J	PN (bar)
BA-BAS308SW	1/2"	M8	21,6	13,0	38,1	54,0	17,5	36,0	16,0	19,0	46,0	350
BA-BAS312SW	3/4"	M10	27,2	19,0	47,6	65,0	22,3	36,0	18,0	19,0	50,0	350
BA-BAS316SW	1"	M10	34,0	25,0	52,4	70,0	26,2	38,0	18,0	19,0	55,0	320
BA-BAS320SW	1 1/4"	M10	42,8	32,0	58,7	79,0	30,2	41,0	21,0	22,0	68,0	280
BA-BAS324SW	1 1/2"	M12	48,6	38,0	69,9	93,0	35,7	45,0	25,0	24,0	78,0	210
BA-BAS332SW	2"	M12	61,0	51,0	77,8	102,0	42,9	45,0	25,0	30,0	90,0	210

*TUBE METRIQUE*

Référence	Taille	M1	A	B	C	D	E	G	H	I	J	PN (bar)
BA-BAS308S20SW	1/2"	M8	20,3	13,0	38,1	54,0	17,5	36,0	16,0	19,0	46,0	350
BA-BAS312S25SW	3/4"	M10	25,3	19,0	47,6	65,0	22,3	36,0	18,0	19,0	50,0	350
BA-BAS316S30SW	1"	M10	30,3	25,0	52,4	70,0	26,2	38,0	18,0	19,0	55,0	320
BA-BAS320S38SW	1 1/4"	M10	38,3	32,0	58,7	79,0	30,2	41,0	21,0	22,0	68,0	280
BA-BAS324S50SW	1 1/2"	M12	50,5	38,0	69,9	93,0	35,7	45,0	25,0	24,0	78,0	210

**6000 PSI - ISO 6162-2**
*TUBE POUCE*

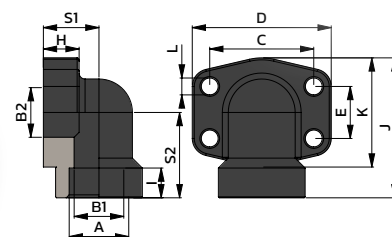
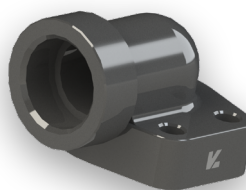
Référence	Taille	M1	A	B	C	D	E	G	H	I	J	PN (bar)
BA-BAS608SW	1/2"	M8	21,6	13,0	40,5	54,0	18,2	36,0	16,0	19,0	46,0	420
BA-BAS612SW	3/4"	M10	27,2	19,0	50,8	71,0	23,8	35,0	21,0	22,0	55,0	420
BA-BAS616SW	1"	M12	34,0	25,0	57,2	81,0	27,8	42,0	25,0	22,0	65,0	420
BA-BAS620SW	1 1/4"	M14	42,8	32,0	66,6	95,0	31,8	45,0	27,0	25,0	78,0	420
BA-BAS624SW	1 1/2"	M16	48,6	38,0	79,3	112,0	36,5	50,0	30,0	28,0	94,0	420
BA-BAS632SW	2"	M20	61,0	51,0	96,8	134,0	44,5	65,0	37,0	24,0	114,0	420

*TUBE METRIQUE*

Référence	Taille	M1	A	B	C	D	E	G	H	I	J	PN (bar)
BA-BAS608S20SW	1/2"	M8	20,3	13,0	40,5	54,0	18,2	36,0	16,0	19,0	46,0	420
BA-BAS612S25SW	3/4"	M10	25,3	19,0	50,8	71,0	23,8	35,0	21,0	22,0	55,0	420
BA-BAS616S30SW	1"	M12	30,3	25,0	57,2	81,0	27,8	42,0	25,0	22,0	65,0	420
BA-BAS620S38SW	1 1/4"	M14	38,3	32,0	66,6	95,0	31,8	45,0	27,0	25,0	78,0	420
BA-BAS624S50SW	1 1/2"	M16	50,5	38,0	79,3	112,0	36,5	50,0	30,0	28,0	94,0	420

**BRIDE 90° A SOUDER SAE 3000 & 6000 SW**

**BLACK  
OXYDE**



**3000 PSI - ISO 6162-1**

Référence	Taille	A	B1	B2	C	D	E	H	I	J	K	L	S1	S2	PN (bar)
BA-BFX30890SW	1/2"	21,6	13,0	13,0	38,1	54,0	17,5	16,0	10,0	60,0	43,0	9,0	20,0	37,0	350
BA-BFX31290SW	3/4"	27,2	19,0	19,0	47,6	65,0	22,3	18,0	10,0	63,0	47,0	11,0	24,0	38,0	350
BA-BFX31690SW	1"	34,0	25,0	25,0	52,4	70,0	26,2	19,0	12,0	70,0	51,0	11,0	28,0	43,0	320
BA-BFX32090SW	1 1/4"	42,8	27,0	32,0	58,7	79,0	30,2	21,0	14,0	85,0	64,0	11,5	34,0	51,0	280
BA-BFX32490SW	1 1/2"	48,6	34,0	38,0	69,9	93,0	35,7	25,0	16,0	95,0	74,0	13,5	38,0	56,0	210
BA-BFX33290SW	2"	61,0	49,0	51,0	77,8	110,0	42,9	25,0	18,0	110,0	85,0	13,5	42,0	65,0	210

**6000 PSI - ISO 6162-2**

Référence	Taille	A	B1	B2	C	D	E	H	I	J	K	L	S1	S2	PN (bar)
BA-BFX60890SW	1/2"	21,6	13,0	13,0	40,5	54,0	18,2	16,0	10,0	60,0	43,0	9,0	20,0	37,0	420
BA-BFX61290SW	3/4"	27,2	19,0	19,0	50,8	70,0	23,8	19,0	12,0	70,0	51,0	11,0	28,0	43,0	420
BA-BFX61690SW	1"	34,0	25,0	25,0	57,2	79,0	27,8	21,0	14,0	85,0	64,0	13,0	34,0	51,0	420
BA-BFX62090SW	1 1/4"	42,8	32,0	32,0	66,6	93,0	31,8	25,0	16,0	95,0	74,0	15,0	38,0	56,0	420
BA-BFX62490SW	1 1/2"	48,6	38,0	38,0	79,3	110,0	36,5	25,0	18,0	110,0	85,0	17,5	42,0	65,0	420
BA-BFX63290SW	2"	61,0	51,0	51,0	96,8	134,0	44,5	35,0	25,0	132,0	107,0	21,0	45,0	75,0	420

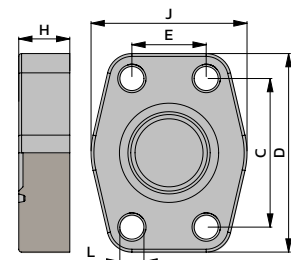
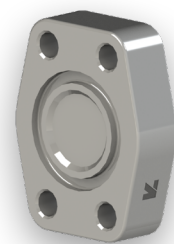
## BRIDE OBTURATRICE SAE 3000 & 6000 (AVEC GORGE)

### 3000 PSI - ISO 6162-1

Référence	Taille	C	D	E	H	J	L	PN (bar)
BA-BO308	1/2"	38,1	56,0	17,5	16,0	48,0	9,0	350
BA-BO312	3/4"	47,6	65,0	22,3	16,0	50,0	11,0	350
BA-BO316	1"	52,4	70,0	26,2	19,0	60,0	11,0	320
BA-BO320	1"1/4	58,7	79,0	30,2	18,0	68,0	11,5	280
BA-BO324	1"1/2	69,9	93,0	35,7	20,0	78,0	13,5	210
BA-BO332	2"	77,8	102,0	42,9	20,0	90,0	13,5	210

### 6000 PSI - ISO 6162-2

Référence	Taille	C	D	E	H	J	L	PN (bar)
BA-BO608	1/2"	40,5	56,0	18,2	16,0	48,0	9,0	420
BA-BO612	3/4"	50,8	71,0	23,8	19,0	60,0	11,0	420
BA-BO616	1"	57,2	81,0	27,8	24,0	70,0	13,0	420
BA-BO620	1"1/4	66,6	95,0	31,8	27,0	78,0	15,0	420
BA-BO624	1"1/2	79,3	112,0	36,5	30,0	94,0	17,0	420
BA-BO632	2"	96,8	134,0	44,5	28,0	114,0	21,0	420



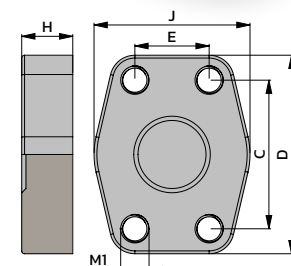
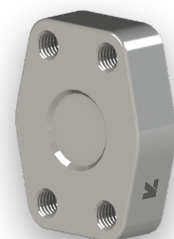
## CONTRE-BRIDE OBTURATRICE SAE 3000 & 6000 (SANS GORGE)

### 3000 PSI - ISO 6162-1

Référence	Taille	M1	C	D	E	H	J	PN (bar)
BA-BO308SG	1/2"	M8	38,1	56,0	17,5	16,0	48,0	350
BA-BO312SG	3/4"	M10	47,6	65,0	22,3	16,0	50,0	350
BA-BO316SG	1"	M10	52,4	70,0	26,2	19,0	60,0	320
BA-BO320SG	1"1/4	M10	58,7	79,0	30,2	18,0	68,0	280
BA-BO324SG	1"1/2	M12	69,9	93,0	35,7	20,0	78,0	210
BA-BO332SG	2"	M12	77,8	102,0	42,9	20,0	90,0	210

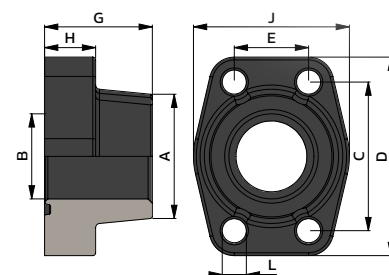
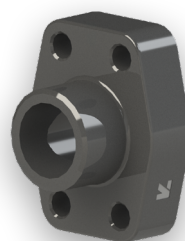
### 6000 PSI - ISO 6162-2

Référence	Taille	M1	C	D	E	H	J	PN (bar)
BA-BO608SG	1/2"	M8	40,5	56,0	18,2	16,0	48,0	420
BA-BO612SG	3/4"	M10	50,8	71,0	23,8	19,0	60,0	420
BA-BO616SG	1"	M12	57,2	81,0	27,8	24,0	70,0	420
BA-BO620SG	1"1/4	M14	66,6	95,0	31,8	27,0	78,0	420
BA-BO624SG	1"1/2	M16	79,3	112,0	36,5	30,0	94,0	420
BA-BO632SG	2"	M20	96,8	134,0	44,5	28,0	114,0	420



**BRIDE A SOUDER SAE 3000 & 6000 BW**

**BLACK OXYDE**



**3000 PSI - ISO 6162-1**

*TUBE POUCIQUE*

Référence	Taille	A	B	C	D	E	G	H	J	L	PN (bar)
BA-BFX308BW	1/2"	21,5	13,0	38,1	54,0	17,5	36,0	16,0	46,0	9,0	350
BA-BFX312BW	3/4"	28,0	19,0	47,6	65,0	22,3	36,0	18,0	50,0	11,0	350
BA-BFX316BW	1"	34,0	25,0	52,4	70,0	26,2	38,0	18,0	55,0	11,0	320
BA-BFX320BW	1 1/4"	42,8	32,0	58,7	79,0	30,2	41,0	21,0	68,0	11,5	280
BA-BFX324BW	1 1/2"	48,6	38,0	69,9	93,0	35,7	44,0	25,0	78,0	13,5	210
BA-BFX332BW	2"	61,0	49,2	77,8	102,0	42,9	45,0	25,0	90,0	13,5	210
BA-BFX340BW	2 1/2"	77,0	63,0	88,9	114,0	50,8	50,0	25,0	105,0	13,5	175
BA-BFX348BW	3"	92,0	73,0	106,4	134,0	61,9	50,0	27,0	124,0	17,5	160

*TUBE METRIQUE*

Référence	Taille	A	B	C	D	E	G	H	J	L	PN (bar)
BA-BFX308S20BW	1/2"	20,3	14,0	38,1	54,0	17,5	35,0	16,0	46,0	9,0	350
BA-BFX312S25BW	3/4"	25,3	19,0	47,6	65,0	22,3	36,0	18,0	50,0	11,0	350
BA-BFX316S30BW	1"	30,3	22,0	52,4	70,0	26,2	38,0	18,0	55,0	11,0	320
BA-BFX320S38BW	1 1/4"	38,3	30,0	58,7	79,0	30,2	41,0	21,0	68,0	11,5	280
BA-BFX324S50BW	1 1/2"	50,5	38,0	69,9	93,0	35,7	44,0	25,0	78,0	13,5	210

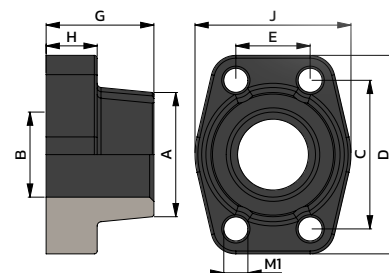
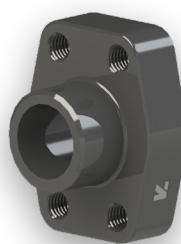
**6000 PSI - ISO 6162-2**

*TUBE POUCIQUE*

Référence	Taille	A	B	C	D	E	G	H	J	L	PN (bar)
BA-BFX608BW	1/2"	21,5	13,0	40,5	54,0	18,2	36,0	16,0	46,0	9,0	420
BA-BFX612BW	3/4"	28,0	19,0	50,8	71,0	23,8	35,0	21,0	55,0	11,0	420
BA-BFX616BW	1"	34,0	25,0	57,2	79,0	27,8	41,0	21,0	68,0	13,0	420
BA-BFX620BW	1 1/4"	42,8	32,0	66,6	93,0	31,8	44,0	25,0	78,0	15,0	420
BA-BFX624BW	1 1/2"	48,6	38,0	79,3	112,0	36,5	55,0	30,0	94,0	17,0	420
BA-BFX632BW	2"	61,0	49,2	96,8	134,0	44,5	65,0	37,0	114,0	21,0	420

*TUBE METRIQUE*

Référence	Taille	A	B	C	D	E	G	H	J	L	PN (bar)
BA-BFX608S20BW	1/2"	20,3	14,0	40,5	54,0	18,2	34,0	16,0	46,0	9,0	420
BA-BFX612S25BW	3/4"	25,3	17,0	50,8	71,0	23,8	35,0	21,0	55,0	11,0	420
BA-BFX616S30BW	1"	30,3	22,0	57,2	81,0	27,8	42,0	25,0	65,0	13,0	420
BA-BFX620S38BW	1 1/4"	38,3	26,0	66,6	95,0	31,8	44,0	25,0	78,0	15,0	420
BA-BFX624S50BW	1 1/2"	50,5	32,0	79,3	112,0	36,5	56,0	28,0	94,0	17,0	420

**CONTRE-BRIDE A SOUDER SAE 3000 & 6000 BW**
**BLACK  
OXYDE**

**3000 PSI - ISO 6162-1**
*TUBE POUCIQUE*

Référence	Taille	M1	A	B	C	D	E	G	H	J	PN (bar)
BA-BAS308BW	1/2"	M8	21,5	13,0	54,0	17,5	36,0	16,0	46,0	46	350
BA-BAS312BW	3/4"	M10	28,0	19,0	65,0	22,3	36,0	18,0	50,0	50	350
BA-BAS316BW	1"	M10	34,0	25,0	70,0	26,2	38,0	18,0	55,0	55	320
BA-BAS320BW	1"1/4	M10	42,8	32,0	79,0	30,2	41,0	21,0	68,0	68	280
BA-BAS324BW	1"1/2	M12	48,6	38,0	93,0	35,7	44,0	25,0	78,0	78	210
BA-BAS332BW	2"	M12	61,0	49,2	102,0	42,9	45,0	25,0	90,0	90	210

*TUBE METRIQUE*

Référence	Taille	M1	A	B	C	D	E	G	H	J	PN (bar)
BA-BAS308S20BW	1/2"	M8	20,3	14,0	38,1	54,0	17,5	35,0	16,0	46,0	350
BA-BAS312S25BW	3/4"	M10	25,3	19,0	47,6	65,0	22,3	36,0	18,0	50,0	350
BA-BAS316S30BW	1"	M10	30,3	22,0	52,4	70,0	26,2	38,0	18,0	55,0	320
BA-BAS320S38BW	1"1/4	M10	38,3	30,0	58,7	79,0	30,2	41,0	21,0	68,0	280
BA-BAS324S50BW	1"1/2	M12	50,5	38,0	69,9	93,0	35,7	44,0	25,0	78,0	210

**6000 PSI - ISO 6162-2**
*TUBE POUCIQUE*

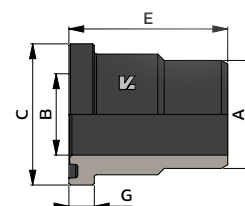
Référence	Taille	M1	A	B	C	D	E	G	H	J	PN (bar)
BA-BAS608BW	1/2"	M8	21,5	13,0	40,5	54,0	18,2	36,0	16,0	46,0	420
BA-BAS612BW	3/4"	M10	28,0	19,0	50,8	71,0	23,8	35,0	21,0	55,0	420
BA-BAS616BW	1"	M12	34,0	25,0	57,2	79,0	27,8	41,0	21,0	68,0	420
BA-BAS620BW	1"1/4	M14	42,8	32,0	66,6	93,0	31,8	44,0	25,0	78,0	420
BA-BAS624BW	1"1/2	M16	48,6	38,0	79,3	112,0	36,5	55,0	30,0	94,0	420
BA-BAS632BW	2"	M20	61,0	49,2	96,8	134,0	44,5	65,0	37,0	114,0	420

*TUBE METRIQUE*

Référence	Taille	M1	A	B	C	D	E	G	H	J	PN (bar)
BA-BAS608S20BW	1/2"	M8	20,3	14,0	40,5	54,0	18,2	34,0	16,0	46,0	420
BA-BAS612S25BW	3/4"	M10	25,3	17,0	50,8	71,0	23,8	35,0	21,0	55,0	420
BA-BAS616S30BW	1"	M12	30,3	22,0	57,2	81,0	27,8	42,0	25,0	65,0	420
BA-BAS620S38BW	1"1/4	M14	38,3	26,0	66,6	95,0	31,8	44,0	25,0	78,0	420
BA-BAS624S50BW	1"1/2	M16	50,5	32,0	79,3	112,0	36,5	56,0	28,0	94,0	420

**COLLET A SOUDER SAE 3000 & 6000 BW**

**BLACK OXYDE**



**3000 PSI - ISO 6162-1**

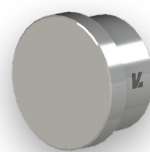
Référence	Taille	A	B	C	E	G	PN (bar)
BA-CAG308S16BW	1/2"	16,0	12,0	30,2	41,0	6,73	350
BA-CAG308S21BW	1/2"	21,5	13,0	30,2	41,0	6,73	350
BA-CAG312S25BW	3/4"	25,0	19,0	38,1	50,0	6,73	350
BA-CAG312S27BW	3/4"	28,0	19,0	38,1	50,0	6,73	350
BA-CAG316S30BW	1"	30,0	22,0	44,4	50,0	8,00	320
BA-CAG316S33BW	1"	34,0	25,0	44,4	50,0	8,00	320
BA-CAG320S38BW	1 1/4"	38,0	28,0	50,8	55,0	8,00	280
BA-CAG320S42BW	1 1/4"	42,8	32,0	50,8	55,0	8,00	280
BA-CAG324S45BW	1 1/2"	45,0	35,0	60,3	57,0	8,00	210
BA-CAG324S50BW	1 1/2"	48,6	38,0	60,3	57,0	8,00	210
BA-CAG332S60BW	2"	60,0	50,0	71,4	57,0	9,53	210
BA-CAG340S70BW	2 1/2"	70,0	55,0	84,1	58,0	9,53	175
BA-CAG348S80BW	3"	80,0	68,0	101,6	60,0	9,53	160

**6000 PSI - ISO 6162-2**

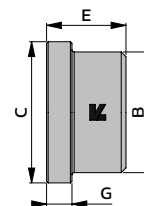
Référence	Taille	A	B	C	E	G	PN (bar)
BA-CAG608S16BW	1/2"	16,0	12,0	31,8	34,0	7,75	420
BA-CAG608S21BW	1/2"	21,5	13,0	31,8	34,0	7,75	420
BA-CAG612S25BW	3/4"	25,0	18,0	41,3	38,0	8,76	420
BA-CAG612S27BW	3/4"	28,0	19,0	41,3	38,0	8,76	420
BA-CAG616S30BW	1"	30,0	22,0	47,6	40,0	9,53	420
BA-CAG616S33BW	1"	34,0	25,0	47,6	40,0	9,53	420
BA-CAG620S38BW	1 1/4"	38,0	27,0	54,0	45,0	10,29	420
BA-CAG620S42BW	1 1/4"	42,8	32,0	54,0	45,0	10,29	420
BA-CAG624S45BW	1 1/2"	45,0	32,0	63,5	50,0	12,57	420
BA-CAG624S50BW	1 1/2"	48,6	38,0	63,5	50,0	12,57	420
BA-CAG632S60BW	2"	60,0	45,0	79,4	58,0	12,57	420

**COLLET OBTURATEUR NU SAE 3000 & 6000**


AVEC GORGE



SANS GORGE


**3000 PSI - ISO 6162-1**
*AVEC GORGE*

Référence	Taille	B	C	E	G	PN (bar)
BA-OB308	1/2"	24,0	30,2	16,0	6,73	350
BA-OB312	3/4"	31,8	38,1	17,0	6,73	350
BA-OB316	1"	38,0	44,5	17,0	8,00	320
BA-OB320	1 1/4"	43,0	50,8	17,0	8,00	280
BA-OB324	1 1/2"	50,0	60,3	19,0	8,00	210
BA-OB332	2"	62,0	71,4	19,0	9,53	210

*SANS GORGE*

Référence	Taille	B	C	E	G	PN (bar)
BA-OB308SG	1/2"	24,0	30,2	16,0	6,73	350
BA-OB312SG	3/4"	31,8	38,1	17,0	6,73	350
BA-OB316SG	1"	38,0	44,5	17,0	8,00	320
BA-OB320SG	1 1/4"	43,0	50,8	17,0	8,00	280
BA-OB324SG	1 1/2"	50,0	60,3	19,0	8,00	210
BA-OB332SG	2"	62,0	71,4	19,0	9,53	210

**6000 PSI - ISO 6162-2**
*AVEC GORGE*

Référence	Taille	B	C	E	G	PN (bar)
BA-OB608	1/2"	24,0	31,8	14,0	7,75	420
BA-OB612	3/4"	31,8	41,3	15,0	8,76	420
BA-OB616	1"	38,0	47,7	16,0	9,53	420
BA-OB620	1 1/4"	44,0	54,0	16,0	10,29	420
BA-OB624	1 1/2"	50,8	63,5	19,0	12,57	420
BA-OB632	2"	67,0	79,4	30,0	12,57	420

*SANS GORGE*

Référence	Taille	B	C	E	G	PN (bar)
BA-OB608SG	1/2"	24,0	31,8	14,0	7,75	420
BA-OB612SG	3/4"	31,8	41,3	15,0	8,76	420
BA-OB616SG	1"	38,0	47,7	16,0	9,53	420
BA-OB620SG	1 1/4"	44,0	54,0	16,0	10,29	420
BA-OB624SG	1 1/2"	50,8	63,5	19,0	12,57	420
BA-OB632SG	2"	67,0	79,4	30,0	12,57	420

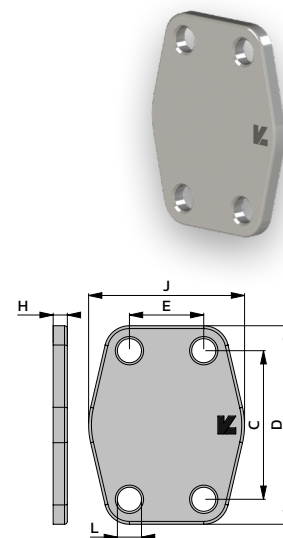
## PLAQUE DE COUVERTURE SAE 3000 & 6000

### 3000 PSI - ISO 6162-1

Référence	Taille	C	D	E	J	H	L
BA-PC308	1/2"	38,1	54,0	17,5	45,6	3,0	9,0
BA-PC312	3/4"	47,6	65,0	22,3	52,0	3,0	11,0
BA-PC316	1"	52,4	70,0	26,2	60,0	3,0	11,0
BA-PC320	1"1/4	58,7	79,0	30,2	68,0	3,0	11,0
BA-PC324	1"1/2	69,9	94,0	35,7	83,0	3,0	13,0
BA-PC332	2"	77,8	102,0	42,9	90,0	3,0	13,0

### 6000 PSI - ISO 6162-2

Référence	Taille	C	D	E	J	H	L
BA-PC608	1/2"	40,5	56,0	18,2	47,2	4,0	9,0
BA-PC612	3/4"	50,8	71,0	23,8	60,0	4,0	11,0
BA-PC616	1"	57,2	81,0	27,8	70,0	4,0	13,0
BA-PC620	1"1/4	66,6	95,0	31,8	78,0	4,0	15,0
BA-PC624	1"1/2	79,3	112,0	36,5	94,0	4,0	17,0
BA-PC632	2"	96,8	133,0	44,5	114,0	4,0	21,0



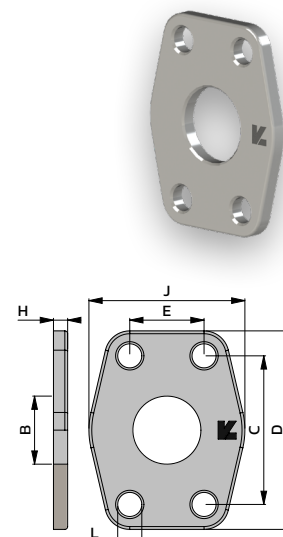
## PLAQUE DE MAINTIEN SAE 3000 & 6000

### 3000 PSI - ISO 6162-1

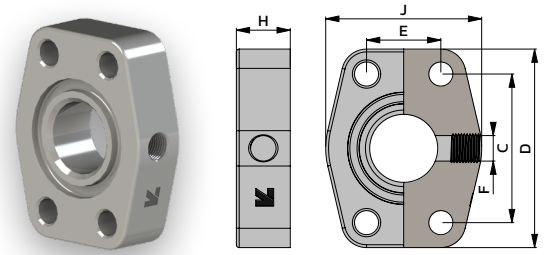
Référence	Taille	B	C	D	E	J	H	L
BA-PM308	1/2"	13,0	38,1	54,0	17,5	45,6	3,0	9,0
BA-PM312	3/4"	19,0	47,6	65,0	22,3	52,0	3,0	11,0
BA-PM316	1"	25,0	52,4	70,0	26,2	60,0	3,0	11,0
BA-PM320	1"1/4	32,0	58,7	79,0	30,2	68,0	3,0	11,0
BA-PM324	1"1/2	38,0	69,9	94,0	35,7	83,0	3,0	13,0
BA-PM332	2"	51,0	77,8	102,0	42,9	90,0	3,0	13,0

### 6000 PSI - ISO 6162-2

Référence	Taille	B	C	D	E	J	H	L
BA-PM608	1/2"	13,0	40,5	56,0	18,2	47,2	4,0	9,0
BA-PM612	3/4"	17,0	50,8	71,0	23,8	60,0	4,0	11,0
BA-PM616	1"	24,0	57,2	81,0	27,8	70,0	4,0	13,0
BA-PM620	1"1/4	31,0	66,6	95,0	31,8	78,0	4,0	15,0
BA-PM624	1"1/2	38,0	79,3	112,0	36,5	94,0	4,0	17,0
BA-PM632	2"	51,0	96,8	133,0	44,5	114,0	4,0	21,0



**BRIDE SAE 3000 & 6000 / PRISE DE PRESSION**



**3000 PSI - ISO 6162-1**

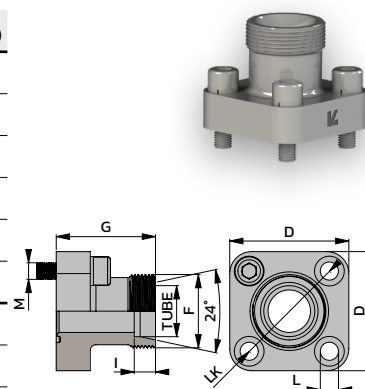
Référence	Taille	F	B	C	D	E	H	J	L	PN (bar)
BA-BM308PP04	1/2"	1/4"	12,0	38,1	56,0	17,5	24,0	38,0	9,0	350
BA-BM312PP04	3/4"	1/4"	19,0	47,6	71,0	22,3	25,0	60,0	11,0	350
BA-BM316PP04	1"	1/4"	25,0	52,4	71,0	26,2	26,0	60,0	11,0	320
BA-BM320PP04	1"1/4	1/4"	32,0	58,7	81,0	30,2	22,0	70,0	11,5	280
BA-BM324PP04	1"1/2	1/4"	38,0	69,9	95,0	35,7	25,0	78,0	13,5	210
BA-BM332PP04	2"	1/4"	51,0	77,8	112,0	42,9	24,0	94,0	13,5	210

**6000 PSI - ISO 6162-2**

Référence	Taille	F	B	C	D	E	H	J	L	PN (bar)
BA-BM608PP04	1/2"	1/4"	13,0	40,5	71,0	18,2	25,0	60,0	9,0	420
BA-BM612PP04	3/4"	1/4"	19,0	50,8	71,0	23,8	25,0	60,0	11,0	420
BA-BM616PP04	1"	1/4"	25,0	57,2	81,0	27,8	22,0	70,0	13,0	420
BA-BM620PP04	1"1/4	1/4"	32,0	66,7	95,0	31,8	25,0	78,0	15,0	420
BA-BM624PP04	1"1/2	1/4"	38,0	79,4	112,0	36,5	28,0	94,0	17,0	420
BA-BM632PP04	2"	1/4"	51,0	96,8	134,0	44,5	28,0	114,0	21,0	420

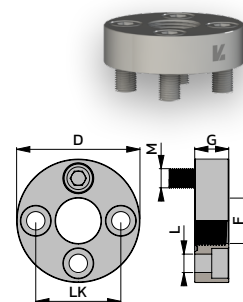
## BRIDE DE POMPE MALE DIN 24° / SERIE L & S

Référence	LK	Tube	F	M	D	G	L	PN (bar)
BA-GF12L35M	35	12L	M18X150	4 - M6X22	39,0	30,0	6,4	315
BA-GF15L35M	35	15L	M22X150	4 - M6X22	39,0	30,0	6,4	250
BA-GF18L35M	35	18L	M26X150	4 - M6X22	39,0	30,0	6,4	250
BA-GF15L40M	40	15L	M22X150	4 - M6X22	42,0	35,0	6,4	250
BA-GF22L40M	40	22L	M30X150	4 - M6X22	42,0	35,0	6,4	100
BA-GF28L40M	40	28L	M36X200	4 - M6X22	42,0	42,0	6,4	100
BA-GF16S35M	35	16S	M24X150	4 - M6X22	39,0	30,0	6,4	315
BA-GF20S55M	55	20S	M30X200	4 - M8X25	55,0	40,0	8,4	250



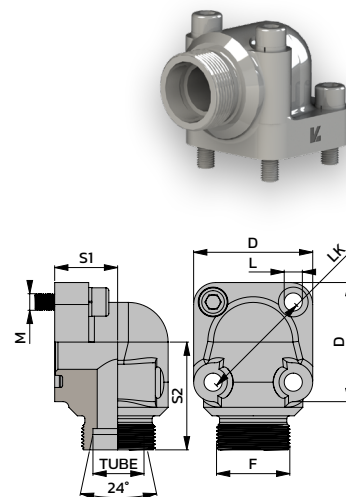
## BRIDE DE POMPE TARAUDE BSP

Référence	LK	F	M	D	G	L	PN (bar)
BA-GF0630M	30	3/8"	4 - M6X16	45,0	11,5	6,5	300
BA-GF0840M	40	1/2"	4 - M8X20	58,0	14,0	8,5	300



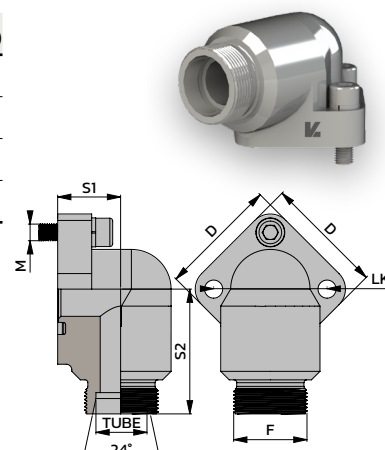
## BRIDE DE POMPE 90° / MALE DIN 24° SERIE L & S

Référence	LK	Tube	F	M	D	S1	S2	L	PN (bar)
BA-WF10L35M	35	10L	M16X150	2 - M6X22 2 - M6X35	39,0	16,5	38,0	6,4	315
BA-WF12L35M	35	12L	M18X150	2 - M6X22 2 - M6X35	39,0	16,5	38,0	6,4	315
BA-WF15L35M	35	15L	M22X150	2 - M6X22 2 - M6X35	39,0	16,5	38,0	6,4	250
BA-WF18L40M	40	18L	M26X150	4 - M6X22	42,0	22,5	38,0	6,4	100
BA-WF22L40M	40	22L	M30X200	4 - M6X22	42,0	22,5	38,0	6,4	100
BA-WF28L40M	40	28L	M36X200	2 - M6X22 2 - M6X50	42,0	28,0	40,0	6,4	100
BA-WF35L55M	55	35L	M45X200	2 - M8X25 2 - M8X60	58,0	32,0	49,0	8,4	100
BA-WF16S35M	35	16S	M24X150	2 - M6X22 2 - M6X40	39,0	20,0	38,0	6,4	315
BA-WF20S35M	35	20S	M30X200	2 - M6X22 2 - M6X45	39,0	25,0	45,0	6,4	315
BA-WF20S40M	40	20S	M30X200	2 - M6X22 2 - M6X45	42,0	22,5	40,0	6,4	250
BA-WF25S55M	55	25S	M36X200	2 - M8X25 2 - M8X55	58,0	30,0	49,0	8,4	250
BA-WF30S55M	55	30S	M42X200	2 - M8X25 2 - M8X50	58,0	32,0	49,0	8,4	250



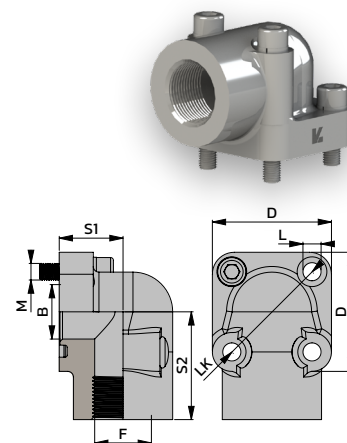
### BRIDE DE POMPE 90° 3 TROUS MALE DIN 24° / SERIE L & S

Référence	LK	Tube	F	M	D	S1	S2	L	PN (bar)
BA-WF12L30-3M	30	12L	M18X150	3 - M6X25	38,0	19,0	37,0	6,4	250
BA-WF15L30-3M	30	15L	M22X150	3 - M6X25	38,0	19,0	37,0	6,4	250
BA-WF22L40-3M	40	22L	M30X200	3 - M8X30	48,0	25,0	43,0	8,4	160
BA-WF28L40-3M	40	28L	M36X200	3 - M8X30	48,0	25,0	43,0	8,4	160



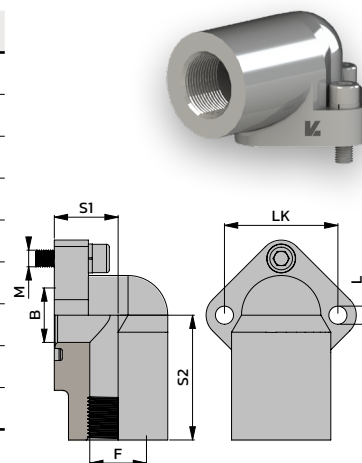
### BRIDE DE POMPE 90° TARAUDE BSP

Référence	LK	F	M	B	D	S1	S2	L	PN (bar)
BA-WF0635M	35	3/8"	2 - M6X25 2 - M6X40	14,0	39,0	18,0	40,0	6,4	315
BA-WF0835M	35	1/2"	2 - M6X22 2 - M6X45	15,0	39,0	25,0	45,0	6,4	315
BA-WF1240M	40	3/4"	2 - M6X25 2 - M6X45	20,0	42,0	24,0	42,5	6,4	160
BA-WF1655M	55	1"	2 - M8X25 2 - M8X70	20,0	58,0	40,0	59,0	8,4	160



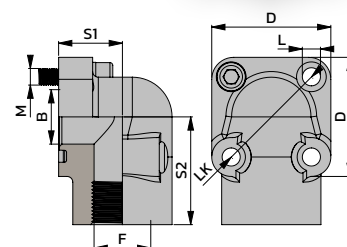
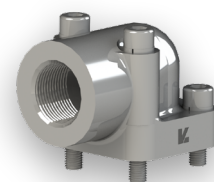
### BRIDE DE POMPE 90° 3 TROUS TARAUDE BSP

Référence	LK	F	M	B	S1	S2	L	PN (bar)
BA-WF0626-3M	26	3/8"	3 - M5X20	11,0	17,0	24,0	5,3	315
BA-WF0630-3M	30	3/8"	3 - M6X20	12,0	17,0	26,0	6,3	315
BA-WF0826-3M	26	1/2"	3 - M5X20	11,0	17,0	24,0	5,3	315
BA-WF0830-3M	30	1/2"	3 - M6X20	12,0	17,0	26,0	6,3	315
BA-WF0840-3M	40	1/2"	3 - M8X25	19,0	21,0	36,0	8,5	315
BA-WF1240-3M	40	3/4"	3 - M8X25	19,0	21,0	36,0	8,5	315
BA-WF1251-3M	51	3/4"	3 - M10X30	26,0	26,0	45,0	10,5	315
BA-WF1651-3M	51	1"	3 - M10X30	24,0	26,0	45,0	10,5	315
BA-WF1656-3M	56	1"	3 - M10X30	26,0	26,0	45,0	10,5	315



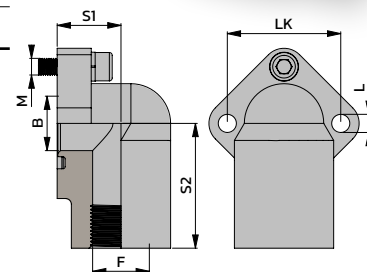
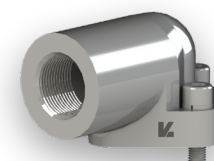
## BRIDE DE POMPE 90° ALU TARAUDE BSP

Référence	LK	F	M	B	D	S1	S2	L	PN (bar)
<b>BA-WF0630AM</b>	30	3/8"	2 - M6X30 2 - M6X45	11,5	35,0	18,0	40,0	6,5	180
<b>BA-WF0830AM</b>	30	1/2"	2 - M6X30 2 - M6X45	11,5	35,0	18,0	40,0	6,5	180
<b>BA-WF0635AM</b>	35	3/8"	2 - M6X30 2 - M6X45	14,0	38,5	18,0	42,5	6,5	180
<b>BA-WF0835AM</b>	35	1/2"	2 - M6X30 2 - M6X45	14,0	38,5	18,0	42,5	6,5	180
<b>BA-WF1240AM</b>	40	3/4"	2 - M6X35 2 - M6X55	17,0	42,0	24,0	47,5	6,5	180
<b>BA-WF1655AM</b>	55	1"	2 - M8X45 2 - M8X60	25,0	58,0	29,0	54,0	8,5	120



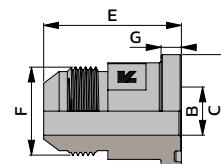
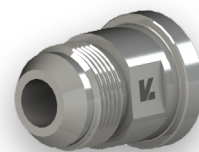
## BRIDE DE POMPE 90° 3 TROUS ALU TARAUDE BSP

Référence	LK	F	M	B	S1	S2	L	PN (bar)
<b>BA-WF0626A-3M</b>	26	3/8"	3 - M5X35	10,0	18,0	31,0	5,3	180
<b>BA-WF0830A-3M</b>	30	1/2"	3 - M6X35	12,5	18,0	30,0	6,5	180
<b>BA-WF1240A-3M</b>	40	3/4"	3 - M8X45	18,5	20,0	40,0	8,5	180
<b>BA-WF1651A-3M</b>	51	1"	3 - M10X60	25,0	26,0	46,0	10,5	180



**COLLET SAE 3000 & 6000 MALE JIC 74°**
**3000 PSI - ISO 6162-1**

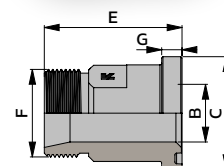
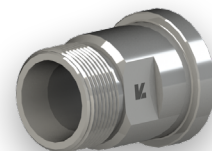
Référence	Taille	F	B	C	E	G	PN (bar)
BA-CAG308J10	1/2"	7/8" UNF	12,3	30,2	48,0	6,73	350
BA-CAG312J12	3/4"	1"1/16 UN	15,5	38,1	55,0	6,73	350
BA-CAG316J12	1"	1"1/16 UN	15,5	44,4	55,0	8,00	320
BA-CAG320J16	1"1/4	1"5/16 UN	21,5	50,8	58,0	8,00	280
BA-CAG320J20	1"1/4	1"5/8 UN	27,5	50,8	58,0	8,00	280
BA-CAG324J24	1"1/2	1"7/8 UN	33,0	60,3	62,0	8,00	210


**6000 PSI - ISO 6162-2**

Référence	Taille	F	B	C	E	G	PN (bar)
BA-CAG608J10	1/2"	7/8" UNF	12,3	31,8	50,0	7,75	350
BA-CAG612J12	3/4"	1"1/16 UN	15,5	41,3	64,0	8,76	350
BA-CAG616J16	1"	1"5/16 UN	21,5	47,6	72,0	9,53	350
BA-CAG620J16	1"1/4	1"5/16 UN	21,5	54,0	81,0	10,29	350
BA-CAG620J20	1"1/4	1"5/8 UN	27,5	54,0	81,0	10,29	275
BA-CAG624J20	1"1/2	1"5/8 UN	27,5	63,5	86,0	12,57	275
BA-CAG624J24	1"1/2	1"7/8 UN	33,0	63,5	86,0	12,57	210

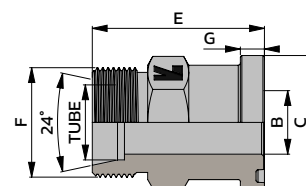
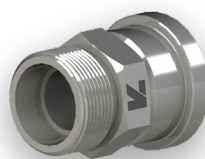
**COLLET SAE 3000 & 6000 MALE BSPP 60°**
**3000 PSI - ISO 6162-1**

Référence	Taille	F	B	C	E	G	PN (bar)
BA-CAG308G	1/2"	1/2"	12,0	30,2	57,0	6,73	350
BA-CAG312G	3/4"	3/4"	17,0	38,1	62,0	6,73	350
BA-CAG316G	1"	1"	24,0	44,4	65,0	8,00	320
BA-CAG320G	1"1/4	1"1/4	27,0	50,8	69,0	8,00	280
BA-CAG324G	1"1/2	1"1/2	32,0	60,3	77,0	8,00	210


**6000 PSI - ISO 6162-2**

Référence	Taille	F	B	C	E	G	PN (bar)
BA-CAG608G	1/2"	1/2"	12,0	31,8	60,0	7,75	420
BA-CAG612G	3/4"	3/4"	19,0	41,3	69,0	8,76	420
BA-CAG616G	1"	1"	20,0	47,6	79,0	9,53	420
BA-CAG620G	1"1/4	1"1/4	30,0	54,0	88,0	10,29	420
BA-CAG624G	1"1/2	1"1/2	30,0	63,5	96,0	12,57	420

**COLLET SAE 3000 & 6000 / MALE DIN 24° SERIE L & S**

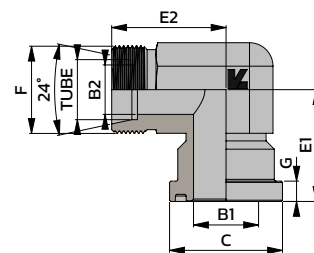
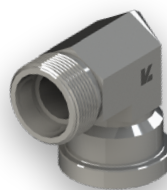


**3000 PSI - ISO 6162-1**

Référence	Taille	Tube	F	B	C	E	G	PN (bar)
BA-CAG308L15	1/2"	15L	M22X150	12,0	30,2	48,0	6,73	315
BA-CAG312L18	3/4"	18L	M26X150	15,0	38,1	53,0	6,73	315
BA-CAG312L22	3/4"	22L	M30X200	19,0	38,1	53,0	6,73	160
BA-CAG316L28	1"	28L	M36X200	24,0	44,4	54,0	8,00	160
BA-CAG320L35	1 1/4"	35L	M45X200	30,0	50,8	58,0	8,00	160
BA-CAG324L42	1 1/2"	42L	M52X200	36,0	60,3	64,0	8,00	160
BA-CAG308S16	1/2"	16S	M24X150	12,0	30,2	50,0	6,73	350
BA-CAG312S20	3/4"	20S	M30X200	16,0	38,1	57,0	6,73	350
BA-CAG316S25	1"	25S	M36X200	20,0	44,4	58,0	8,00	320
BA-CAG320S30	1 1/4"	30S	M42X200	25,0	50,8	62,0	8,00	280
BA-CAG324S38	1 1/2"	38S	M52X200	32,0	60,3	70,0	8,00	210

**6000 PSI - ISO 6162-2**

Référence	Taille	Tube	F	B	C	E	G	PN (bar)
BA-CAG608S16	1/2"	16S	M24X150	12,0	31,8	53,0	7,75	420
BA-CAG612S20	3/4"	20S	M30X200	16,0	41,3	61,0	8,76	420
BA-CAG612S25	3/4"	25S	M36X200	17,0	41,3	63,0	8,76	420
BA-CAG616S30	1"	30S	M42X200	24,0	47,6	74,0	9,53	420
BA-CAG620S38	1 1/4"	38S	M52X200	30,0	54,0	83,0	10,29	420
BA-CAG624S38	1 1/2"	38S	M52X200	30,0	63,5	89,0	12,57	350

**COLLET 90° SAE 3000 & 6000 MALE DIN 24° / SERIE L & S**

**3000 PSI - ISO 6162-1**

Référence	Taille	Tube	F	B1	B2	C	E1	E2	G	PN (bar)
BA-CAG308L1590	1/2"	15L	M22X150	11,0	12,0	30,2	39,0	36,0	6,73	315
BA-CAG312L1890	3/4"	18L	M26X150	19,0	15,0	38,1	42,0	39,0	6,73	315
BA-CAG312L2290	3/4"	22L	M30X200	19,0	19,0	38,1	42,0	41,0	6,73	160
BA-CAG316L2890	1"	28L	M36X200	25,0	24,0	44,4	45,0	44,0	8,00	160
BA-CAG320L3590	1 1/4"	35L	M45X200	27,0	30,0	50,8	50,0	57,0	8,00	160
BA-CAG324L4290	1 1/2"	42L	M52X200	36,0	36,0	60,3	55,0	58,0	8,00	160
BA-CAG308S1690	1/2"	16S	M24X150	12,0	12,0	30,2	39,0	38,0	6,73	350
BA-CAG312S2090	3/4"	20S	M30X200	19,0	16,0	38,1	42,0	43,0	6,73	350
BA-CAG312S2590	3/4"	25S	M36X200	19,0	17,0	38,1	42,0	45,0	6,73	350
BA-CAG316S3090	1"	30S	M42X200	25,0	24,0	44,4	45,0	47,0	8,00	320
BA-CAG320S3090	1 1/4"	30S	M42X200	27,0	25,0	50,8	50,0	57,0	8,00	280
BA-CAG324S3890	1 1/2"	38S	M52X200	32,0	32,0	60,3	55,0	64,0	8,00	210

**6000 PSI - ISO 6162-2**

Référence	Taille	Tube	F	B1	B2	C	E1	E2	G	PN (bar)
BA-CAG608S1690	1/2"	16S	M24X150	12,0	12,0	31,8	39,0	38,0	7,75	420
BA-CAG612S2090	3/4"	20S	M30X200	17,0	16,0	41,3	48,0	46,0	8,76	420
BA-CAG616S2590	1"	25S	M36X200	24,0	20,0	47,6	60,0	53,0	9,53	420
BA-CAG616S3090	1"	30S	M42X200	24,0	24,0	47,6	60,0	55,0	9,53	420
BA-CAG620S3090	1 1/4"	30S	M42X200	31,0	25,0	54,0	68,0	58,0	10,29	420
BA-CAG624S3890	1 1/2"	38S	M52X200	36,0	30,0	63,5	76,0	72,0	12,57	350

**NOTES**

## **DMH, FOURNISSEUR DE CONNECTIQUE HYDRAULIQUE**

Chez DMH France, nous nous engageons à fournir à nos clients les solutions les plus adaptées à leur besoin, grâce à un service efficace et dans les meilleurs délais.

Pour cela, nous avons développé la marque LK Fluid, une gamme complète de connecteurs hydraulique de haute qualité.

Les produits LK Fluid bénéficient d'une capacité de stockage de plus de 5000 m<sup>2</sup>, permettant une forte disponibilité et de faibles délais de livraison.

Ciblant principalement le marché européen, DMH fournit les grands constructeurs ainsi que les spécialistes de la distribution (machines agricoles, poids lourds, industries, etc.).

Nos 20 années d'expérience nous ont permis de construire de forts partenariats avec nos clients, les accompagnant dans leur poursuite d'excellence.

### **UNE GAMME COMPLETE DE PRODUITS HYDRAULIQUES**



#### **DMH ■ Agence de Nantes**

6 rue Jupiter 44470 Carquefou FRANCE  
T +33 (0)2 40 25 77 27  
distribution@dmhfrance.com  
oem@dmhfrance.com

#### **DMH ■ Agence de Lyon**

5 av. Lionel Terray 69330 Meyzieu FRANCE  
T +33 (0)4 37 25 84 50  
infolyon@dmhfrance.com

**[www.dmhfrance.com](http://www.dmhfrance.com)**



**DMH France certifiée ISO 9001:2015**

