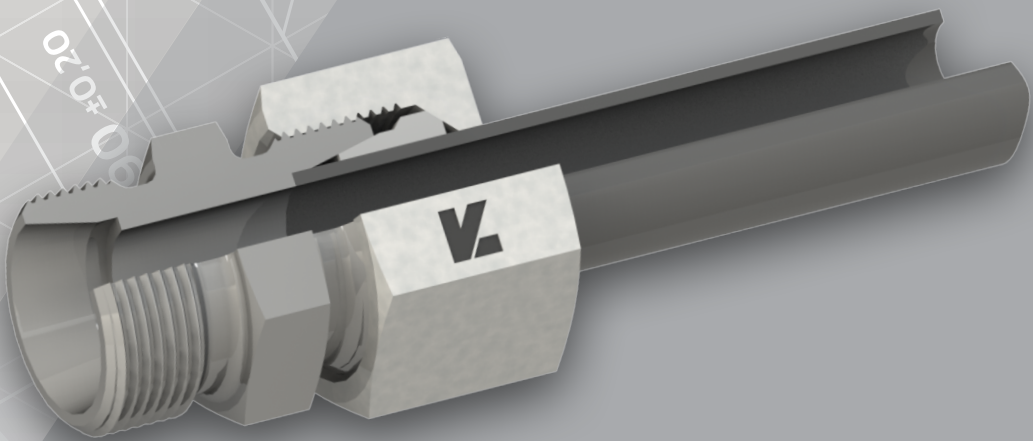




DMH

L K F l u i d



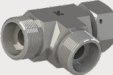


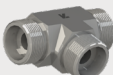





GAZZ

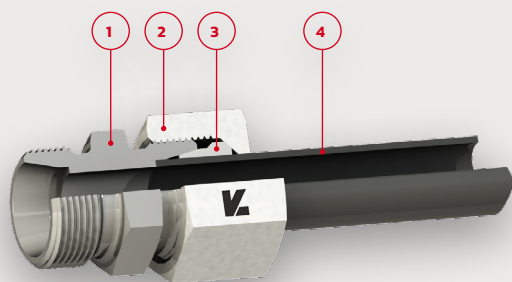
RACCORDS

www.dmhfrance.com

SOMMAIRE

	RÉFÉRENCE	PAGE		RÉFÉRENCE	PAGE
	SOMMAIRE	GA 2		COUDE ORIENTABLE DKO	GA 9
	CARACTERISTIQUES TECHNIQUES	GA 3		COUDE 45° ORIENTABLE DKO	GA 9
	ECROU	GA 4		COUDE ORIENTABLE MALE BSPP	GA 9
	BAGUE COUPANTE	GA 4		TE ORIENTABLE	GA 10
	EMBOUIT A SOUDER	GA 4		TE ORIENTABLE RENVERSE	GA 10
	OBTURATEUR	GA 5		TE MALE BSPT	GA 10
	BOUCHON MALE	GA 5		UNION MALE METRIQUE JE	GA 11
	UNION DOUBLE	GA 5		UNION MALE BSPP JE	GA 11
	UNION DOUBLE REDUITE	GA 6		UNION MALE SAE	GA 11
	COUDE EGAL	GA 6		ADAPTATEUR TOURNANT DKO / BSPP JE	GA 12
	TE EGAL	GA 6		UNION MALE BSPT	GA 12
	CROIX EGALE	GA 7		ADAPTATEUR EGAL DKO	GA 12
	UNION DOUBLE PASSE-CLOISON	GA 7		COUDE MALE BSPT	GA 13
	COUDE EGAL PASSE-CLOISON	GA 7		COUDE ORIENTABLE DKO / MALE BSPT	GA 13
	UNION FEMELLE BSPP	GA 8		ADAPTATEUR TOURNANT DKO / MALE BSPT	GA 13
	ADAPTATEUR TOURNANT DKO / FEMELLE BSPP	GA 8		ADAPTATEUR TOURNANT DKO / MALE METRIQUE JE	GA 14
	UNION FEMELLE / FEMELLE DKO	GA 8		ADAPTATEUR DE REDUCTION DKO	GA 14
	UNION FEMELLE / FEMELLE REDUITE DKO	GA 8		UNION MALE VALVE AGRICOLE	GA 14
	UNION MALE PASSE-CLOISON BSPP JE	GA 9		UNION FEMELLE VALVE AGRICOLE	GA 15

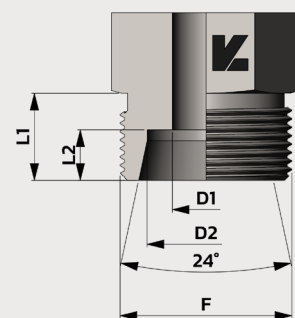
CARACTERISTIQUES TECHNIQUES



- 1 - RACCORD SERIE GAZ FRANCAISE
- 2 - ECROU SERIE GAZ FRANCAISE
- 3 - BAGUE SERIE GAZ FRANCAISE
- 4 - TUBE HYDRAULIQUE SERIE GAZ FRANCAISE

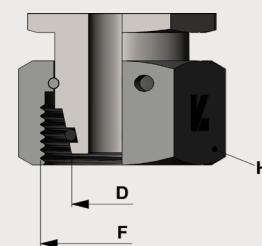
MALE CONE 24° SERIE GAZ FRANÇAISE

Ø Tube (mm)	F	D2	D1	L1	L2	PN (bar)
13G	M20X150	13,35	8	12	9	400
17G	M24X150	16,85	12	12	9	400
21G	M30X150	21,35	15	14	9	250
27G	M36X150	26,85	21	14	9	250
33G	M45X150	33,75	26	16	9	160
42G	M52X150	42,55	33	16	9	100



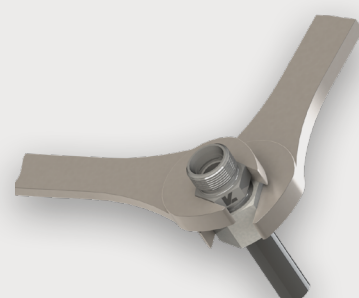
ECROUS TOURNANTS CONE 24° SERIE GAZ FRANÇAISE

Ø Tube (mm)	F	D	H	O-ring	PN (bar)
13G	M20X150	13,25	24	11X2,0	400
17G	M24X150	16,75	30	14X2,0	400
21G	M30X150	21,25	36	18X2,5	250
27G	M36X150	26,75	41	24X2,5	250
33G	M45X150	33,50	50	31X2,5	160
42G	M52X150	42,25	62	38X2,5	100



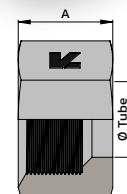
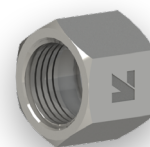
COUPLE DE SERRAGE SERIE GAZ FRANÇAISE

Ø Tube (mm)	Couple (N.m)
13G	65
17G	85
21G	135
27G	170
33G	280
42G	320



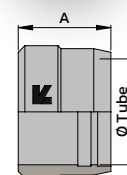
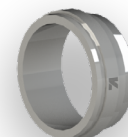
ECROU

Référence	Ø Tube (mm)	F	A	H	PN (bar)
GEA13	13G	M20X150	17,5	24	400
GEA17	17G	M24X150	19,0	30	400
GEA21	21G	M30X150	21,0	36	250
GEA27	27G	M36X150	21,5	41	250
GEA33	33G	M45X150	23,5	50	160
GEA42	42G	M52X150	24,5	60	100



BAGUE COUPANTE

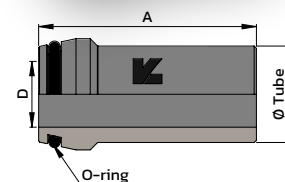
Référence	Ø Tube (mm)	A	PN (bar)
GBA13	13G	10,5	400
GBA17	17G	10,5	400
GBA21	21G	10,0	250
GBA27	27G	10,6	250
GBA33	33G	10,6	160
GBA42	42G	11,5	100



EMBOUT A SOUDER

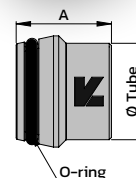
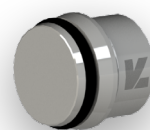
**BLACK
OXYDE**

Référence	Ø Tube (mm)	A	D	O-ring	PN (bar)
GESA13	13G	40,0	7,5	11X2,0	400
GESA17	17G	42,0	11,0	14X2,0	400
GESA21	21G	48,0	14,5	18X2,5	250
GESA27	27G	51,0	20,0	24X2,5	250
GESA33	33G	59,0	26,0	30X2,5	160
GESA42	42G	66,0	32,5	38X2,5	100



OBTURATEUR

Référence	Ø Tube (mm)	A	O-ring	PN (bar)
GOBA13	13G	20,0	11X2,0	400
GOBA17	17G	20,0	14X2,0	400
GOBA21	21G	21,0	18X2,5	250
GOBA27	27G	22,0	24X2,5	250
GOBA33	33G	22,0	30X2,5	160
GOBA42	42G	23,0	38X2,5	100



Embout

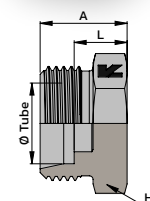
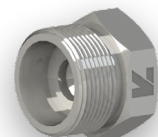
Protections

DIN

JIC

BOUCHON MALE

Référence	Ø Tube (mm)	F	A	L	H	PN (bar)
GBM13	13G	M20X150	19,0	10,0	22	400
GBM17	17G	M24X150	20,0	11,0	27	400
GBM21	21G	M30X150	23,0	12,0	32	250
GBM27	27G	M36X150	24,0	15,0	36	250
GBM33	33G	M45X150	28,0	19,0	46	160
GBM42	42G	M52X150	30,0	21,0	55	100



ORFS

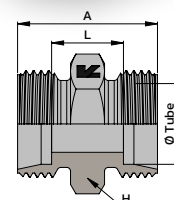
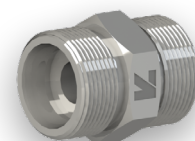
BSP

GAZ

Graissage

UNION DOUBLE

Référence	Ø Tube (mm)	F1	A	L	H	PN (bar)
GUA13	13G	M20X150	31,0	13,0	22	400
GUA17	17G	M24X150	32,0	14,0	27	400
GUA21	21G	M30X150	37,0	19,0	32	250
GUA27	27G	M36X150	38,0	20,0	36	250
GUA33	33G	M45X150	44,0	26,0	46	160
GUA42	42G	M52X150	46,0	28,0	55	100



Coupleurs

Vannes Composants

Brides

Prises-Pression Manomètres

Colliers

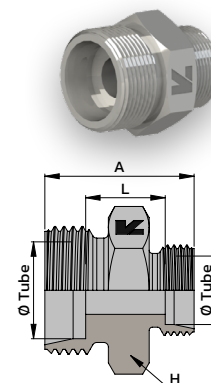
Joint

Lavage



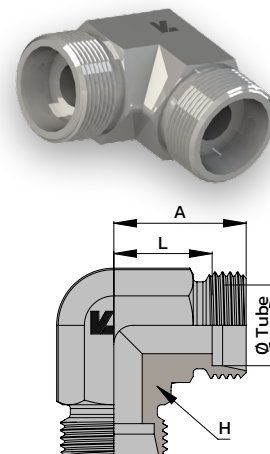
UNION DOUBLE REDUITE

Référence	Ø Tube (mm)	F1	F2	A	L	H	PN (bar)
GURA17/13	17G / 13G	M24X150	M20X150	33,0	15,0	27	400
GURA21/13	21G / 13G	M30X150	M20X150	35,0	17,0	32	250
GURA21/17	21G / 17G	M30X150	M24X150	35,0	17,0	32	250
GURA13/10	13G / 10L	M20X150	M16X150	30,0	14,0	22	315
GURA13/12	13G / 12L	M20X150	M18X150	30,0	14,0	22	315
GURA13/15	13G / 15L	M20X150	M22X150	30,0	14,0	24	315
GURA17/12	17G / 12L	M24X150	M12X150	31,0	15,0	27	315
GURA17/15	17G / 15L	M24X150	M22X150	33,0	17,0	27	315
GURA27/21	27G / 21G	M36X150	M30X150	38,0	20,0	36	315



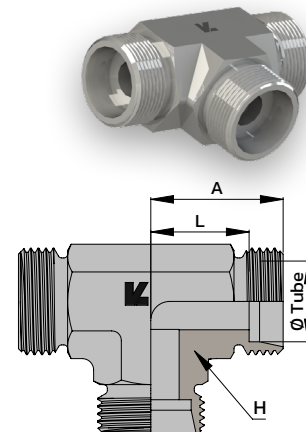
COUDE EGAL

Référence	Ø Tube (mm)	F	A	L	H	PN (bar)
GCA13	13G	M20X150	27,5	18,5	19	400
GCA17	17G	M24X150	30,0	21,0	24	400
GCA21	21G	M30X150	35,0	24,0	27	250
GCA27	27G	M36X150	38,0	28,0	36	250
GCA33	33G	M45X150	47,0	34,0	41	160
GCA42	42G	M52X150	52,0	43,0	50	100



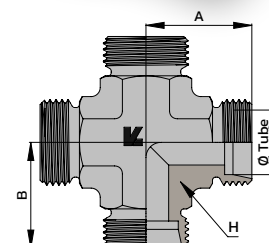
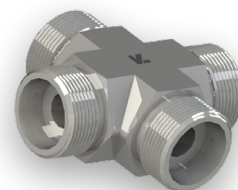
TE EGAL

Référence	Ø Tube (mm)	F	A	L	H	PN (bar)
GTA13	13G	M20X150	15,0	25,0	19	400
GTA17	17G	M24X150	30,0	21,0	24	400
GTA21	21G	M30X150	35,5	24,5	27	250
GTA27	27G	M36X150	38,0	28,0	36	250
GTA33	33G	M45X150	47,0	34,0	41	160
GTA42	42G	M52X150	52,0	43,0	50	100



CROIX EGALE

Référence	Ø Tube (mm)	F	A	B	H	PN (bar)
GCXA13	13G	M20X150	25,0	14,0	19	400
GCXA17	17G	M24X150	27,0	16,0	22	400
GCXA21	21G	M30X150	35,5	23,0	27	250
GCXA27	27G	M36X150	38,5	29,5	36	250



Embout

Protections

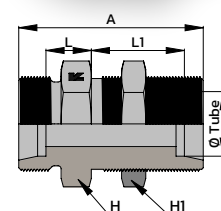
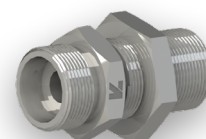
DIN

JIC

ORFS

UNION DOUBLE PASSE-CLOISON

Référence	Ø Tube (mm)	F	A	L	L1	H	H1	PN (bar)
GUA13/CL	13G	M20X150	53,0	10,0	25,0	27	27	400
GUA17/CL	17G	M24X150	55,0	11,0	26,0	32	32	400
GUA21/CL	21G	M30X150	61,0	13,0	28,0	36	36	250
GUA27/CL	27G	M36X150	62,0	15,0	29,0	46	46	250
GUA33/CL	33G	M45X150	70,0	19,0	33,0	55	55	160
GUA42/CL	42G	M52X150	72,0	20,0	34,0	65	65	100



BSP

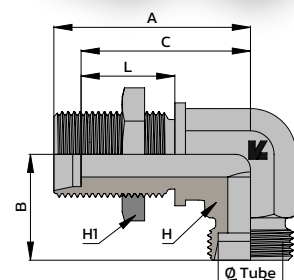
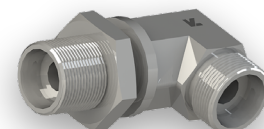
GAZ

Graissage

Coupleurs

COUDE EGAL PASSE-CLOISON

Référence	Ø Tube (mm)	F	A	B	C	L	H	H1	PN (bar)
GCA13/CL	13G	M20X150	61,0	29,0	52,0	29,0	19	27	400
GCA17/CL	17G	M24X150	64,0	32,0	55,0	31,0	24	32	400
GCA21/CL	21G	M30X150	74,0	37,0	65,0	35,0	27	41	250
GCA27/CL	27G	M36X150	81,0	40,0	72,0	38,0	36	46	250
GCA33/CL	33G	M45X150	86,0	46,0	77,0	38,0	41	55	160



Vannes Composants

Brides

Prises Pression Manomètres

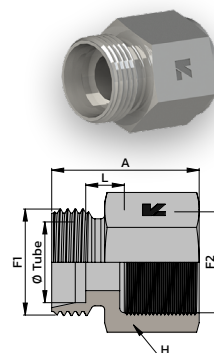
Colliers

Joint

Lavage

UNION FEMELLE BSPP

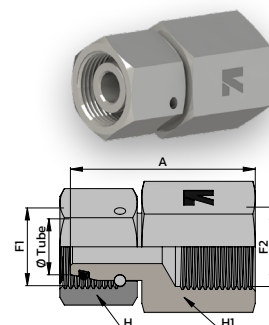
Référence	Ø Tube (mm)	F1	F2	A	L	H	PN (bar)
GUFA13/8X13	13G	M20X150	1/4"	28,0	7	22	400
GUFA13/12X17	13G	M20X150	3/8"	28,0	7	22	400
GUFA13/15X21	13G	M20X150	1/2"	30,0	7	27	400
GUFA17/8X13	17G	M24X150	1/4"	28,0	7	27	400
GUFA17/12X17	17G	M24X150	3/8"	28,0	7	27	400
GUFA17/15X21	17G	M24X150	1/2"	30,0	7	27	400
GUFA21/15X21	21G	M30X150	1/2"	32,0	9	32	250
GUFA21/20X27	21G	M30X150	3/4"	34,0	7	32	250
GUFA27/20X27	27G	M36X150	3/4"	34,5	9,5	41	250



ADAPTATEUR TOURNANT DKO / FEMELLE BSPP

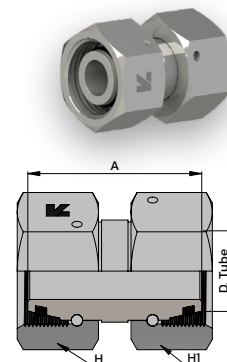


Référence	Ø Tube (mm)	F1	F2	A	H	H1	Bar
GAFA13/15X21DKO	13G	M20X150	1/2"	44,0	24	27	400



UNION FEMELLE / FEMELLE DKO

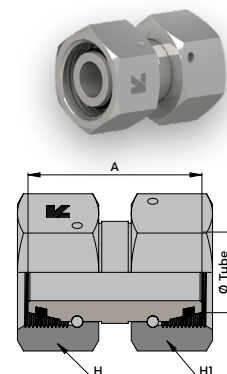
Référence	Ø Tube (mm)	F	A	H	H1	PN (bar)
GUFF13DKO	13G	M20X150	44,0	24	24	400
GUFF17DKO	17G	M24X150	45,0	30	30	400
GUFF21DKO	21G	M30X150	46,0	36	36	250
GUFF27DKO	27G	M36X150	40,0	41	41	250



UNION FEMELLE / FEMELLE REDUITE DKO



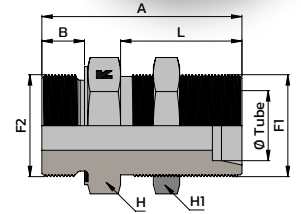
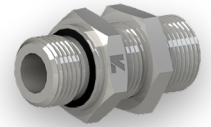
Référence	Ø Tube (mm)	F1	F2	A	H	H1	PN (bar)
GUFF13/12LDKO	13G / 12L	M20X150	M18X150	37,0	24	22	400
GUFF13/15LDKO	13G / 15L	M20X150	M22X150	40,0	24	27	400
GUFF17/13DKO	17G / 13G	M24X150	M20X150	41,0	30	24	400
GUFF17/15LDKO	17G / 10L	M24X150	M22X150	41,0	30	27	400





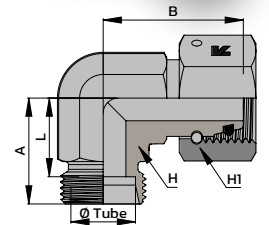
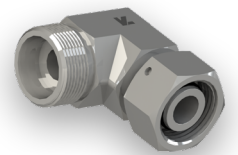
UNION MALE PASSE-CLOISON BSPP JE

Référence	Ø Tube (mm)	F1	F2	A	B	L	H	H1	PN (bar)
GUMA13/15X21JE-PCL	13G	M20X150	1/2"	59,0	12,0	34,0	27	27	400
GUMA17/15X21JE-PCL	17G	M24X150	1/2"	59,0	12,0	35,0	32	32	400



COUDE ORIENTABLE DKO

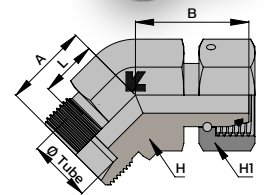
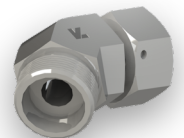
Référence	Ø Tube (mm)	F	A	B	L	H	H1	PN (bar)
GCELA13DKO	13G	M20X150	27,5	30,5	18,5	19	24	400
GCELA17DKO	17G	M24X150	30,0	33,5	21,0	24	30	400
GCELA21DKO	21G	M30X150	35,0	39,5	24,5	27	36	250
GCELA27DKO	27G	M36X150	38,0	46,0	28,0	36	41	250
GCELA33DKO	33G	M45X150	44,0	47,5	35,0	41	50	160



COUDE 45° ORIENTABLE DKO



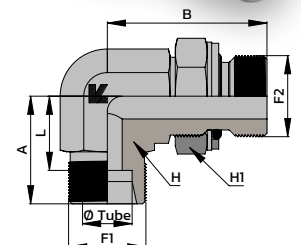
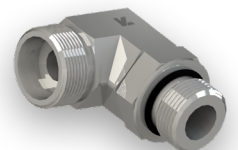
Référence	Ø Tube (mm)	F	A	B	L	H	H1	PN (bar)
GCELA4513DKO	13G	M20X150	23,5	28,5	14,5	19	24	400
GCELA4517DKO	17G	M24X150	26,0	31,5	17,0	24	30	400



COUDE ORIENTABLE MALE BSPP

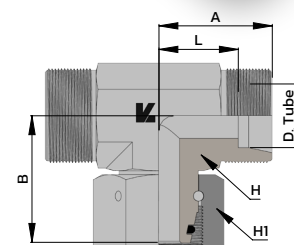
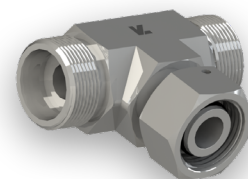


Référence	Ø Tube (mm)	F1	F2	A	B	L	H	H1	PN (bar)
GCMG13/15X21	13G	M20X150	1/2"	29,0	43,0	20,0	22	27	400



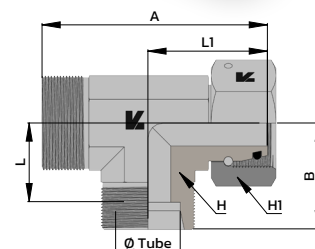
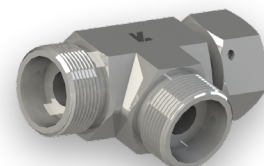
TE ORIENTABLE

Référence	Ø Tube (mm)	F	A	B	L	H	H1	PN (bar)
GTELA13DKO	13G	M20X150	27,5	30,5	18,5	19	24	400
GTELA17DKO	17G	M24X150	30,0	33,5	21,0	24	30	400
GTELA21DKO	21G	M30X150	35,0	39,5	24,5	27	36	250
GTELA27DKO	27G	M36X150	38,0	46,0	28,0	36	41	250



TE ORIENTABLE RENVERSE

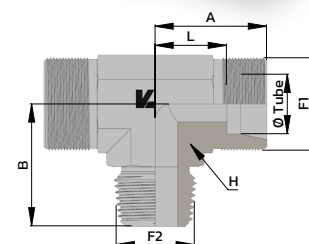
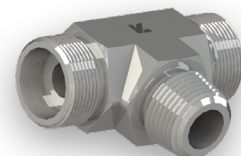
Référence	Ø Tube (mm)	F	A	B	L	L1	H	H1	PN (bar)
GTELAR13DKO	13G	M20X150	58,0	27,5	18,5	30,5	19	24	400
GTELAR17DKO	17G	M24X150	63,5	30,0	21,0	33,5	24	30	400
GTELAR21DKO	21G	M30X150	74,5	35,0	24,5	39,5	27	36	250
GTELAR27DKO	27G	M36X150	84,0	38,0	28,0	46,0	36	41	250



TE MALE BSPT



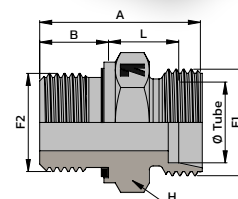
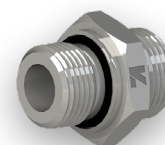
Référence	Ø Tube (mm)	F1	F2	A	B	L	H	PN (bar)
GTMCA13/8X13	13G	M20X150	1/4"	25,0	30,0	16,0	19	400
GTMCA13/12X17	17G	M24X150	3/8"	25,0	30,0	16,0	19	400



UNION MALE METRIQUE JE

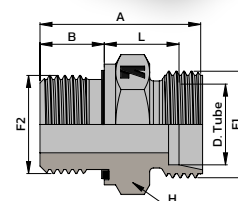
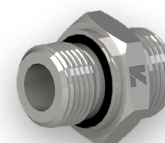


Référence	Ø Tube (mm)	F1	F2	A	B	L	H	PN (bar)
GUMA13/14X150JE	13G	M20X150	M14X150	31,0	10,0	12,0	22	400
GUMA13/16X150JE	13G	M20X150	M16X150	31,0	10,0	12,0	22	400
GUMA13/18X150JE	13G	M20X150	M18X150	33,0	12,0	12,0	24	400
GUMA13/20X150JE	13G	M20X150	M20X150	34,0	12,0	13,0	27	400
GUMA13/22X150JE	13G	M20X150	M22X150	35,0	13,0	13,0	27	400
GUMA17/18X150JE	17G	M24X150	M18X150	32,0	12,0	12,0	27	400
GUMA17/20X150JE	17G	M24X150	M20X150	34,0	12,0	13,0	27	400
GUMA17/22X150JE	17G	M24X150	M22X150	35,0	14,0	13,0	27	400
GUMA21/22X150JE	21G	M30X150	M22X150	37,0	14,0	15,0	32	250



UNION MALE BSPP JE

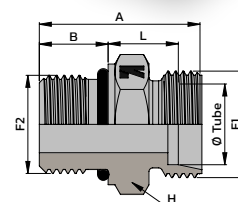
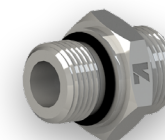
Référence	Ø Tube (mm)	F1	F2	A	B	L	H	PN (bar)
GUMA13/8X13JE	13G	M20X150	1/4"	29,5	10,0	10,5	22	400
GUMA13/12X17JE	13G	M20X150	3/8"	31,0	10,0	12,0	22	400
GUMA13/15X21JE	13G	M20X150	1/2"	34,0	12,0	13,0	27	400
GUMA17/8X13JE	17G	M24X150	1/4"	30,0	10,0	11,0	27	400
GUMA17/12X17JE	17G	M24X150	3/8"	31,0	10,0	12,0	27	400
GUMA17/15X21JE	17G	M24X150	1/2"	34,0	12,0	13,0	27	400
GUMA17/20X27JE	17G	M24X150	3/4"	40,0	14,0	17,0	32	400
GUMA21/15X21JE	21G	M30X150	1/2"	36,0	12,0	15,0	32	250
GUMA21/20X27JE	21G	M30X150	3/4"	41,5	14,0	18,5	32	250
GUMA27/20X27JE	27G	M36X150	3/4"	41,5	14,0	18,5	36	250
GUMA27/26X34JE	27G	M36X150	1"	43,5	16,0	18,5	41	250
GUMA33/26X34JE	33G	M45X150	1"	45,5	16,0	20,5	46	160
GUMA33/33X42JE	33G	M45X150	1 1/4"	50,0	18,0	23,0	50	160
GUMA42/33X42JE	42G	M52X150	1 1/4"	50,0	18,0	23,1	55	100
GUMA42/40X49JE	42G	M52X150	1 1/2"	50,0	18,0	23,1	55	100



UNION MALE SAE

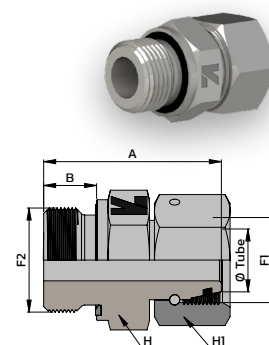


Référence	Ø Tube (mm)	F1	F2	A	B	L	H	PN (bar)
GUMA13X9/16U	13G	M20X150	9/16" UNF	32,0	9,9	13,0	22	400
GUMA13X3/4U	13G	M20X150	3/4" UNF	31,5	11,1	11,5	22	400
GUMA13X7/8U	13G	M20X150	7/8" UNF	34,0	12,7	12,5	27	400

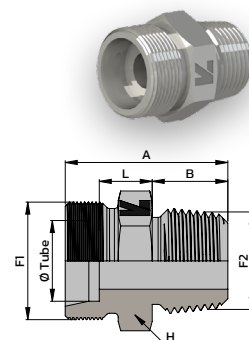


ADAPTATEUR TOURNANT DKO / BSPP JE

Référence	Ø Tube (mm)	F1	F2	A	B	H	H1	PN (bar)
GAA13/8X13DKO	13G	M20X150	1/4"	35,0	10,0	19	24	400
GAA13/12X17DKO	13G	M20X150	3/8"	37,0	10,0	22	24	400
GAA13/15X21DKO	13G	M20X150	1/2"	40,0	12,0	27	24	400
GAA17/8X13DKO	17G	M24X150	1/4"	39,0	10,0	24	30	400
GAA17/12X17DKO	17G	M24X150	3/8"	39,0	10,0	24	30	400
GAA17/15X21DKO	17G	M24X150	1/2"	43,0	12,0	27	30	400
GAA17/20X27DKO	17G	M24X150	3/4"	47,0	14,0	32	30	400
GAA21/15X21DKO	21G	M30X150	1/2"	45,0	12,0	27	36	250
GAA21/20X27DKO	21G	M30X150	3/4"	49,0	14,0	32	36	250
GAA27/20X27DKO	27G	M36X150	3/4"	49,0	14,0	32	41	250
GAA27/26X34DKO	27G	M36X150	1"	50,0	16,0	41	41	250
GAA33/26X34DKO	33G	M45X150	1"	53,0	16,0	41	50	160

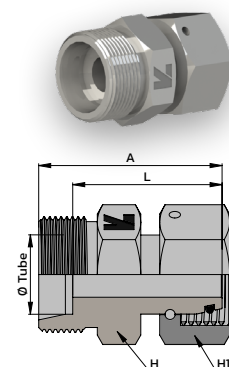

UNION MALE BSPT

Référence	Ø Tube (mm)	F1	F2	A	B	L	H	PN (bar)
GUMCA13/8X13	13G	M20X150	1/4"	31,5	12,5	10,0	22	400
GUMCA13/12X17	13G	M20X150	3/8"	32,0	13,0	10,0	22	400
GUMCA13/15X21	13G	M20X150	1/2"	37,0	17,0	11,0	22	400
GUMCA17/8X13	17G	M24X150	1/4"	32,5	12,5	11,0	27	400
GUMCA17/12X17	17G	M24X150	3/8"	33,0	13,0	11,0	27	400
GUMCA17/15X21	17G	M24X150	1/2"	37,0	17,0	11,0	27	400
GUMCA17/20X27	17G	M24X150	3/4"	40,0	19,0	12,0	27	400
GUMCA21/12X17	21G	M30X150	3/8"	36,0	13,0	14,0	32	250
GUMCA21/15X21	21G	M30X150	1/2"	40,0	17,0	14,0	32	250
GUMCA21/20X27	21G	M30X150	3/4"	42,0	19,0	14,0	32	250
GUMCA27/15X21	27G	M36X150	1/2"	41,0	17,0	15,0	36	250
GUMCA27/20X27	27G	M36X150	3/4"	43,0	19,0	15,0	36	250
GUMCA27/26X34	27G	M36X150	1"	45,5	21,5	15,0	36	250
GUMCA33/26X34	33G	M45X150	1"	49,5	21,5	19,0	46	160
GUMCA33/33X42	33G	M45X150	1 1/4"	52,0	24,0	19,0	46	160
GUMCA42/33X42	42G	M52X150	1 1/4"	53,5	24,0	20,5	55	100
GUMCA42/40X49	42G	M52X150	1 1/2"	53,5	24,0	20,5	55	100


ADAPTATEUR EGAL DKO

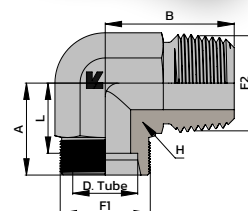
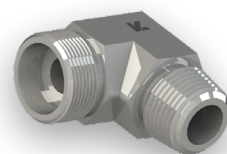
 AUTRES TAILLES
 SUR DEMANDE

Référence	Ø Tube (mm)	F	A	L	H	H1	PN (bar)
GAAD13FDKO	13G	M20X150	40,5	31,5	22	24	400
GAAD21FDKO	21G	M30X150	49,0	40,0	32	36	250



COUDE MALE BSPT

Référence	Ø Tube (mm)	F1	F2	A	B	L	H	PN (bar)
GCMCA13/8X13	13G	M20X150	1/4"	27,5	30,5	18,5	19	400
GCMCA13/12X17	13G	M20X150	3/8"	27,5	31,0	18,5	19	400
GCMCA13/15X21	13G	M20X150	1/2"	27,5	32,5	18,5	19	400
GCMCA17/8X13	17G	M24X150	1/4"	27,0	30,0	18,0	24	400
GCMCA17/12X17	17G	M24X150	3/8"	27,0	30,5	18,0	24	400
GCMCA17/15X21	17G	M24X150	1/2"	27,0	33,0	18,0	24	400
GCMCA17/20X27	17G	M24X150	3/4"	30,0	41,0	21,0	27	400
GCMCA21/12X17	21G	M30X150	3/8"	32,0	35,0	16,4	27	250
GCMCA21/15X21	21G	M30X150	1/2"	35,0	38,0	24,5	27	250
GCMCA21/20X27	21G	M30X150	3/4"	35,0	41,0	24,5	27	250
GCMCA27/20X27	27G	M36X150	3/4"	38,0	46,0	28,0	36	250
GCMCA27/26X34	27G	M36X150	1"	38,0	48,0	28,0	36	250
GCMCA33/26X34	33G	M45X150	1"	45,5	54,0	36,5	41	160
GCMCA33/33X42	33G	M45X150	1"1/4	46,0	54,0	37,0	41	160
GCMCA42/33X42	42G	M52X150	1"1/4	52,0	61,0	43,0	50	100



Embout

Protections

DIN

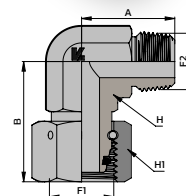
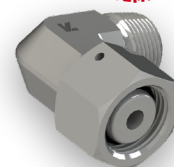
JIC

ORFS

COUDE ORIENTABLE DKO / MALE BSPT



Référence	Ø Tube (mm)	F1	F2	A	B	H	H1	Bar
GCACA13/12X17DKO	13G	M20X150	3/8"	30,5	31,0	19,0	24	400



BSP

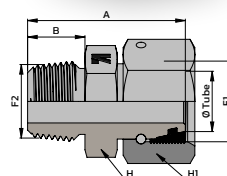
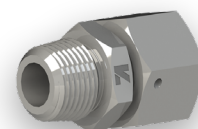
GAZ

Graissage

Coupleurs

ADAPTATEUR TOURNANT DKO / MALE BSPT

Référence	Ø Tube (mm)	F1	F2	A	B	H	H1	PN (bar)
GACA13/8X13DKO	13G	M20X150	1/4"	38,0	12,5	17	24	400
GACA13/12X17DKO	13G	M20X150	3/8"	39,5	13,0	19	24	400
GACA13/15X21DKO	13G	M20X150	1/2"	41,5	17,0	22	24	400
GACA17/8X13DKO	17G	M24X150	1/4"	41,0	12,5	22	30	400
GACA17/12X17DKO	17G	M24X150	3/8"	41,0	13,0	22	30	400
GACA17/15X21DKO	17G	M24X150	1/2"	45,0	17,0	27	30	400
GACA21/15X21DKO	21G	M30X150	1/2"	47,0	17,0	27	36	250
GACA21/20X27DKO	21G	M30X150	3/4"	49,5	19,0	27	36	250
GACA27/20X27DKO	27G	M36X150	3/4"	50,0	20,0	36	41	250
GACA27/26X34DKO	27G	M36X150	1"	54,0	21,5	36	41	250



Vannes Composants

Brides

Prises-Pression Manomètres

Colliers

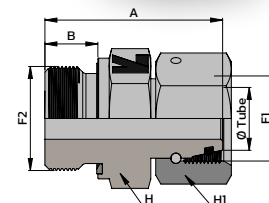
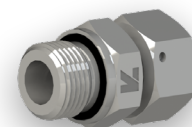
Joints

Lavage



ADAPTATEUR TOURNANT DKO / MALE METRIQUE JE

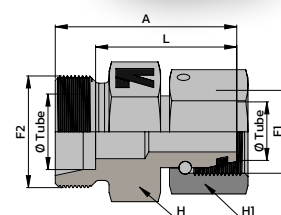
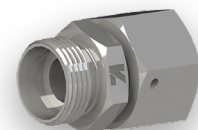
Référence	Ø Tube (mm)	F1	F2	A	B	H	H1	PN (bar)
GAA13/16X15ODKO	13G	M20X150	16X150	39,0	10,0	22	24	400
GAA13/18X15ODKO	13G	M20X150	18X150	43,0	12,0	24	24	400
GAA17/18X15ODKO	17G	M24X150	18X150	44,0	12,0	24	30	400
GAA17/22X15ODKO	17G	M24X150	22X150	46,0	13,0	27	30	400



ADAPTATEUR DE REDUCTION DKO

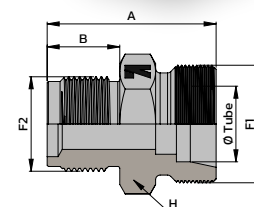
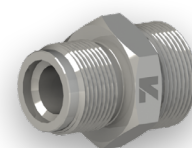


Référence	Ø Tube (mm)	F1	F2	A	L	H	H1	PN (bar)
GARA13X17DKO	13G / 17G	M20X150	M24X150	40,5	31,5	27	24	400
GARA17X13DKO	17G / 13G	M24X150	M20X150	37,0	28,0	24	30	400
GARA21X13DKO	21G / 13G	M30X150	M20X150	43,0	34,0	27	36	250
GARA21X17DKO	21G / 17G	M30X150	M24X150	43,0	34,0	27	36	250
GARA12X13LDKO	12L / 13G	M18X150	M20X150	37,5	28,5	22	24	400
GARA13X10LDKO	13G / 10L	M20X150	M16X150	33,5	26,5	17	24	315
GARA13X12LDKO	13G / 12L	M20X150	M18X150	33,5	24,5	19	24	315
GARA13X15LDKO	13G / 15L	M20X150	M22X150	40,5	33,5	24	24	315
GARA15X13LDKO	15L / 13G	M22X150	M20X150	40,5	31,5	27	24	400
GARA17X15LDKO	17G / 15L	M24X150	M22X150	41,0	34,0	24	30	315



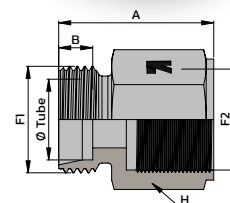
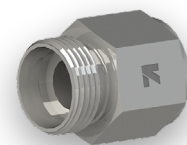
UNION MALE VALVE AGRICOLE

Référence	Ø Tube (mm)	F1	F2	A	B	H	PN (bar)
GMVA18X15OEM13	13G	M20X150	M18X150	35,0	15,8	22	400
GMVA18X15OEM17	17G	M24X150	M18X150	40,0	15,8	27	400
GMVA24X15OEM13	13G	M20X150	M24X150	42,2	18,0	27	400



UNION FEMELLE VALVE AGRICOLE

Référence	Ø Tube (mm)	F1	F2	A	B	H	PN (bar)
GFVA18EM13	13G	M20X150	M18X150	30,0	9,0	24	400
GFVA18EM17	17G	M24X150	M18X150	30,0	9,0	24	400



DMH, FOURNISSEUR DE CONNECTIQUE HYDRAULIQUE

Chez DMH France, nous nous engageons à fournir à nos clients les solutions les plus adaptées à leur besoin, grâce à un service efficace et dans les meilleurs délais.

Pour cela, nous avons développé la marque LK Fluid, une gamme complète de connecteurs hydraulique de haute qualité.

Les produits LK Fluid bénéficient d'une capacité de stockage de plus de 5000 m², permettant une forte disponibilité et de faibles délais de livraison.

Ciblant principalement le marché européen, DMH fournit les grands constructeurs ainsi que les spécialistes de la distribution (machines agricoles, poids lourds, industries, etc.).

Nos 20 années d'expérience nous ont permis de construire de forts partenariats avec nos clients, les accompagnant dans leur poursuite d'excellence.

UNE GAMME COMPLETE DE PRODUITS HYDRAULIQUES



DMH ■ Agence de Nantes

6 rue Jupiter 44470 Carquefou FRANCE
T +33 (0)2 40 25 77 27
distribution@dmhfrance.com
oem@dmhfrance.com

DMH ■ Agence de Lyon

5 av. Lionel Terray 69330 Meyzieu FRANCE
T +33 (0)4 37 25 84 50
infolyon@dmhfrance.com

www.dmhfrance.com



DMH France certifiée ISO 9001:2015

