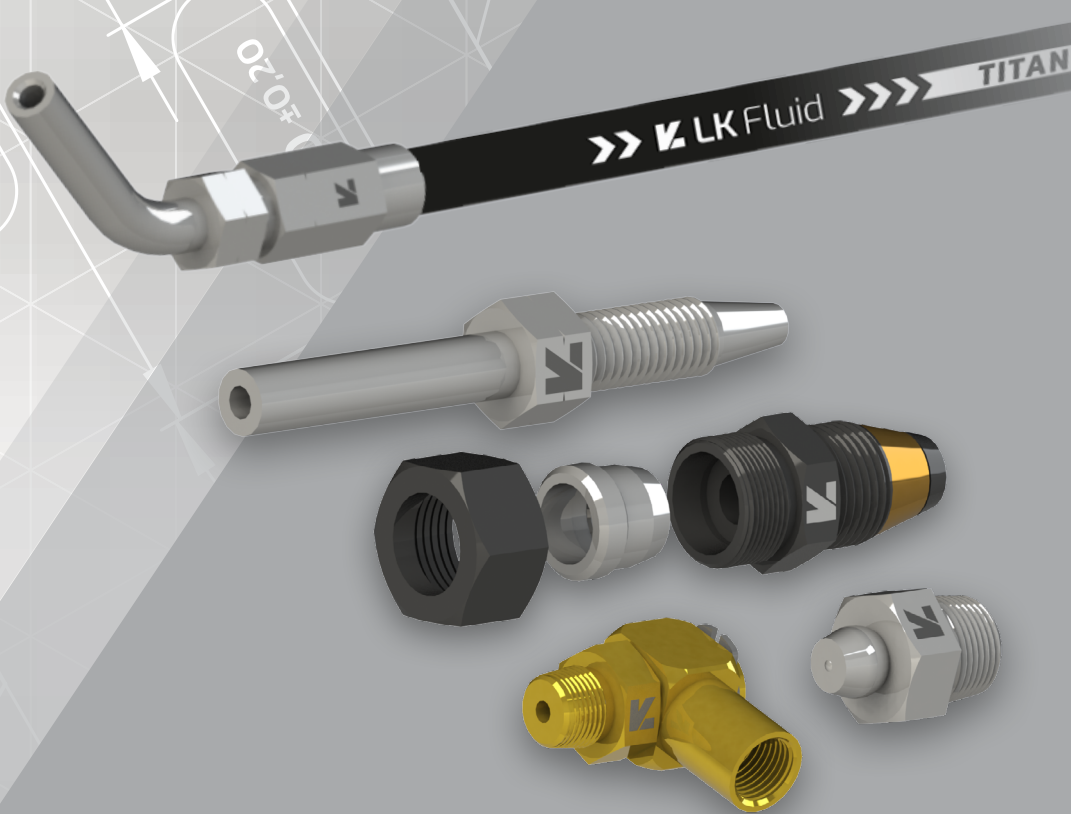




DMH

L K F l u i d



GRAISSAGE

www.dmhfrance.com

SOMMAIRE

RÉFÉRENCE	PAGE	RÉFÉRENCE	PAGE
 SOMMAIRE	GR 2	 UNION MALE METRIQUE CONIQUE COMPLET	GR 8
 TUYAU DE GRAISSAGE PA 12 (SANS GRAISSE)	GR 4	 COUDE MALE METRIQUE CONIQUE COMPLET	GR 9
 FOURRURE	GR 4	 UNION MALE BSPT COMPLET	GR 9
 BAGUE BICONE	GR 4	 CLAPET MALE BSPT COMPLET	GR 9
 VIS DE COMPRESSION	GR 4	 COUDE MALE BSPT COMPLET	GR 9
 TUYAU DE GRAISSAGE POLYAMIDE (SANS GRAISSE)	GR 5	 UNION MALE BSPP JE COMPLET	GR 10
 PINCE COUPANTE	GR 5	 UNION FEMELLE METRIQUE PASSE-CLOISON COMPLET	GR 10
 JUPE A VISSER	GR 5	 PROLONGATEUR MALE METRIQUE CONIQUE / FEMELLE METRIQUE	GR 10
 EMBOUT A VISSER LISSE	GR 5	 COUDE MALE METRIQUE CONIQUE / FEMELLE METRIQUE	GR 10
 EMBOUT A VISSER 90° LISSE	GR 6	 COUDE DEPORTE MALE METRIQUE CONIQUE / FEMELLE METRIQUE	GR 11
 EMBOUT A VISSER 90° LISSE HAUTEUR SPECIFIQUE	GR 6	 COUDE 45° MALE METRIQUE CONIQUE / FEMELLE METRIQUE	GR 11
 EMBOUT A VISSER 45° LISSE	GR 6	 COUDE ORIENTABLE FEMELLE BSPP / MALE CONIQUE	GR 11
 ECROU	GR 7	 REDUCTION COURTE PASSE-CLOISON MALE METRIQUE / FEMELLE BSPP	GR 12
 BAGUE COUPANTE	GR 7	 PROLONGATEUR MALE BSPT / FEMELLE METRIQUE	GR 12
 UNION DOUBLE COMPLET	GR 7	 MANCHON FEMELLE METRIQUE	GR 12
 COUDE EGAL COMPLET	GR 7	 MANCHON FEMELLE BSPP	GR 12
 TE EGAL COMPLET	GR 8	 UNION DOUBLE BSPT	GR 13
 CROIX EGALE COMPLET	GR 8	 PROLONGATEUR MALE BSPT / FEMELLE BSPP	GR 13

SOMMAIRE

RÉFÉRENCE		PAGE	RÉFÉRENCE		PAGE
	COUDE MALE BSPT / FEMELLE BSPP	GR 13		GRAISSEUR BSPT	GR 19
	COUDE 45° MALE BSPT / FEMELLE BSPP	GR 13		GRAISSEUR 45° BSPT	GR 19
	TE RENVERSE FEMELLE BSPP / MALE BSPT	GR 14		GRAISSEUR 90° BSPT	GR 19
	UNION DOUBLE ENCLIQUETABLE	GR 14		COFFRET DE GRAISSEURS - 160 PCES	GR 19
	CLAPET ENCLIQUETABLE	GR 14		BOUCHON DE GRAISSEUR	GR 20
	ADAPTATEUR ENCLIQUETABLE / MALE METRIQUE CONIQUE	GR 14		SOUPAPE DE DECHARGE	GR 20
	ADAPTATEUR ENCLIQUETABLE / MALE BSPT	GR 15		AGRAFE	GR 20
	COUDE ENCLIQUETABLE / MALE METRIQUE CONIQUE	GR 15		ADAPTATEUR REMPLISSAGE / GRAISSAGE CENTRALISE	GR 21
	COUDE ENCLIQUETABLE / MALE BSPT	GR 15		ADAPTATEUR 90° REMPLISSAGE / GRAISSAGE CENTRALISE	GR 21
	BANJO BSPP JE COMPLET / SERIE LL	GR 16		SERINGUE DE REMPLISSAGE	GR 21
	BANJO SPECIAL GRAISSAGE	GR 16		POMPE A GRAISSE 1 MAIN	GR 21
	BOUCHON MALE ISO	GR 15		BLOC DISTRIBUTEUR EN "L"	GR 22
	COFFRET RACCORDS GRAISSAGE	GR 17		BLOC DISTRIBUTEUR EN "T"	GR 22
	GRAISSEUR METRIQUE CONIQUE	GR 18		COUPLEUR A VISSER SPECIAL GRAISSAGE	GR 22
	GRAISSEUR METRIQUE CONIQUE AUTO-TARAUDANT	GR 18			
	GRAISSEUR 45° METRIQUE CONIQUE	GR 18			
	GRAISSEUR 90° METRIQUE CONIQUE	GR 18			

TUYAU DE GRAISSAGE

ZELOS

Référence	Ø Tuyau		Pression		Ø	Rayon	Poids
TTGR03-ZEL-V*	3	1/8"	93	279	6	36	46
TTGR03-ZEL-P**	3	1/8"	93	279	6	36	47

Attention : la pression de ce tuyau chute à partir de 30 °C

* Tuyau vide - sans graisse

** Tuyau rempli de graisse EP 2



Norme de référence : DIN 73378

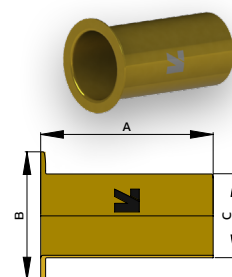
Température : -40 à + 100 °C

Revêtement : PA 12 HL noir

Application : graissage / lubrification

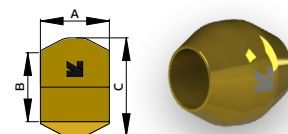
FOURRURE

Référence	A	B	C
GR-FR04L	10,5	3,9	2,5
GR-FR06L	10,5	6,0	2,9



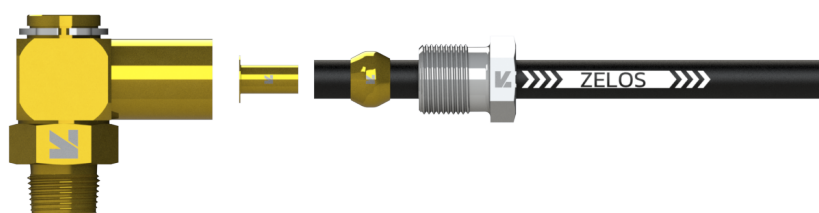
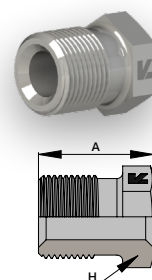
BAGUE BICONE

Référence	A	B	C
GR-BC04L	4,5	4,1	6,0
GR-BC06L	5	6,1	8,0



VIS DE COMPRESSION

Référence	F	A	H
GR-VCBM8X1-ZN	M8X100	12,0	8,0
GR-VCBM10X1-ZN	M10X100	14,0	10,0



Exemple de montage

GR-BJ1/8KFM10L-SP ■ GR-FR06L ■ GR-BC06L ■ GR-VCBM10X1-ZN ■ TTGR03-ZEL-V

TUYAU DE GRAISSAGE

TITAN

Référence	Ø Tuyau		Pression		Ø	Rayon	Poids	Jupe recommandée
								A visser
TTGRO4-TIT-V*	4	5/32"	280	840	8,6	20	46	GR-RB03-ZN
TTGRO4-TIT-P**	4	5/32"	280	840	8,6	20	47	GR-RB03-ZN
TTGRO6-TIT-V*	6	1/4"	280	840	11,3	20	84	GR-RB04-ZN
TTGRO6-TIT-P**	6	1/4"	280	840	11,3	20	85	GR-RB04-ZN



Norme de référence : "Design lubrification / graissage"

Température : -40 à +80 °C

Renforcement : 1 tresse textile

Revêtement : thermoplastique noir

Application : graissage / lubrification

* Tuyau vide - sans graisse

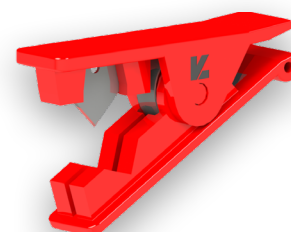
** Tuyau rempli de graisse EP 2

PINCE COUPANTE

Référence

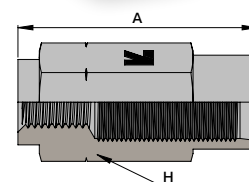
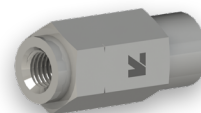
GR-PINCECOUPE

Outil manuel pour couper le tuyau de graissage



JUPE A VISSER

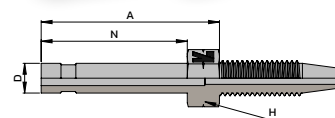
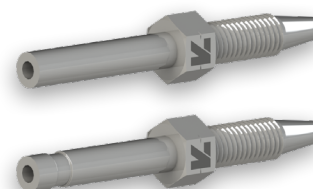
Référence	DN	Inch	Int	A	H
GR-RB03-ZN	4	5/32"	7,0	28,0	12
GR-RB04-ZN	6	1/4"	11,0	35,9	17



EMBOU A VISSER LISSE

Référence	DN	Inch	A	D	H	N	PN (bar)
GR-RPDL0306-L20-ZN	4	5/32"	26,0	6,0	10	20,0	280
GR-RPDL0306-ZN	4	5/32"	36,5	6,0	10	30,0	280
GR-RPDL0306-LN-ZN *	4	5/32"	36,0	6,0	10	30,0	280
GR-RPDL0406-ZN	6	1/4"	28,5	6,0	12	22,0	280

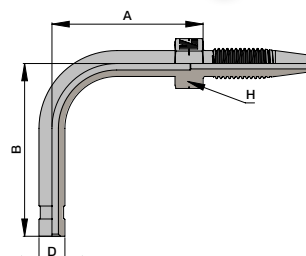
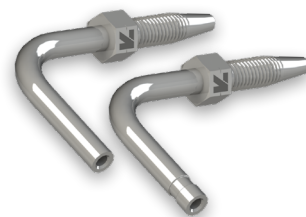
* version Lincoln = pour raccord encliquetable



EMBOUT A VISSER 90° LISSE

Référence	DN	Inch	A	B	D	H	PN (bar)
GR-RP90L0306-ZN	4	5/32"	20,0	32,5	6,0	10	280
GR-RP90L0306-LN-ZN *	4	5/32"	20,0	32,5	6,0	10	280
GR-RP90L0406-ZN	6	1/4"	27,5	45,0	6,0	12	280

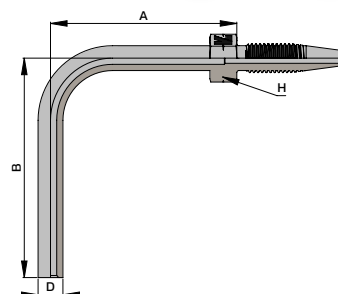
* version Lincoln = pour raccord encliquetable



EMBOUT A VISSER 90° LISSE HAUTEUR SPECIFIQUE

Référence	DN	Inch	A	B	D	H	PN (bar)
GR-RP90L0306H43-ZN	4	5/32"	20,0	43,0	6,0	10	280
GR-RP90L0306H43-LN*	4	5/32"	20,0	43,0	6,0	10	280
GR-RP90L0306H53-ZN	4	5/32"	20,0	53,0	6,0	10	280
GR-RP90L0306H53-LN*	4	5/32"	20,0	53,0	6,0	10	280

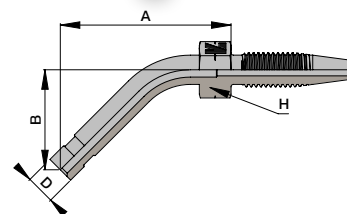
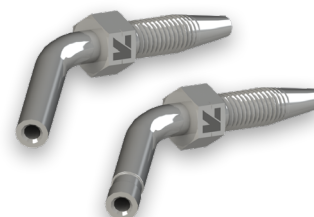
* version Lincoln = pour raccord encliquetable



EMBOUT A VISSER 45° LISSE

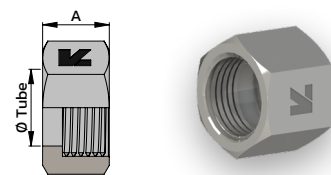
Référence	DN	Inch	A	B	D	H	PN (bar)
GR-RP45L0306-ZN	4	5/32"	35,0	20,5	6,0	10	280
GR-RP45L0306-LN-ZN *	4	5/32"	35,0	20,5	6,0	10	280
GR-RP45L0406-ZN	6	1/4"	37,0	25,0	6,0	12	280

* version Lincoln = pour raccord encliquetable



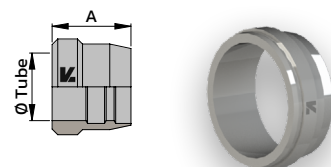
ECROU

Référence	Ø Tube (mm)	F	A	H
DA-EC06LL-ZN	6LL	M10X100	11,5	12



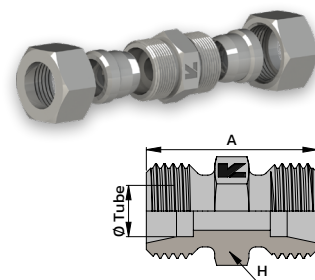
BAGUE COUPANTE

Référence	Ø Tube (mm)	A
DA-B06LL-ZN	6,0	7,0



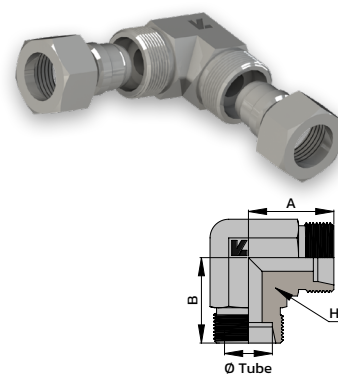
UNION DOUBLE COMPLET

Référence	Ø Tube (mm)	F	A	H	PN (bar)
DA-UD06LLC-ZN	6,0	M10X100	21,0	11	100



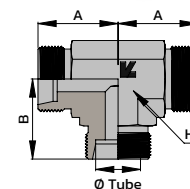
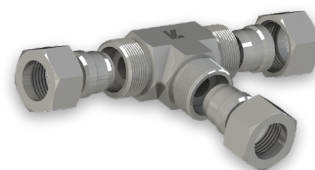
COUDE EGAL COMPLET

Référence	Ø Tube (mm)	F	A	B	H	PN (bar)
DA-CE06LLC-ZN	6	M10X100	15,0	15,0	9	100



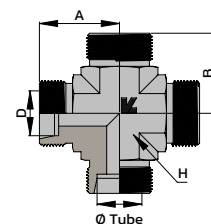
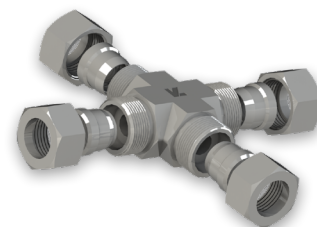
TE EGAL COMPLET

Référence	Ø Tube (mm)	F	A	B	H	PN (bar)
DA-TE06LLC-ZN	6	M10X100	15,0	15,0	9	100



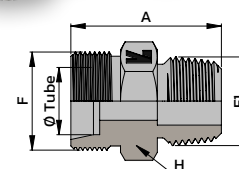
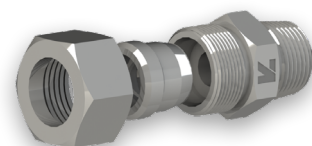
CROIX EGALE COMPLET

Référence	Ø Tube (mm)	F	A	B	H	PN (bar)
DA-CRE06LLC-ZN	6	M10X100	15,0	15,0	9	100



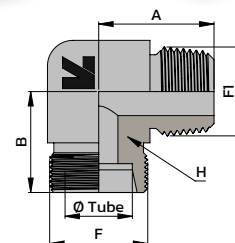
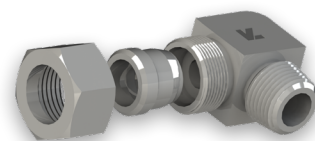
UNION MALE METRIQUE CONIQUE COMPLET

Référence	Ø Tube (mm)	F	F1	A	H	PN (bar)
DA-UMC06LLM06C-ZN	6,0	M10X100	M6X100	21,0	12	100
DA-UMC06LLM08C-ZN	6,0	M10X100	M8X100	21,0	12	100
DA-UMC06LLMC-ZN	6,0	M10X100	M8X125	22,0	11	100
DA-UMC06LLM10C-ZN	6,0	M10X100	M10X100	21,0	11	100



COUDE MALE METRIQUE CONIQUE COMPLET

Référence	Ø Tube (mm)	F	F1	A	B	H	PN (bar)
DA-CMC06LLM06C-ZN	6,0	M10X100	M6X100	17,0	15,0	11	100
DA-CMC06LLM08C-ZN	6,0	M10X100	M8X100	17,0	15,0	11	100
DA-CMC06LLMC-ZN	6,0	M10X100	M8X125	17,5	15,0	11	100
DA-CMC06LLM10C-ZN	6,0	M10X100	M10X100	17,0	15,0	11	100



Embout

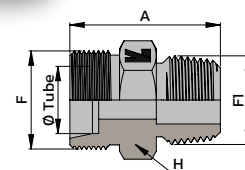
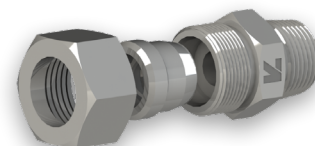
Protections

DIN

JIC

UNION MALE BSPT COMPLET

Référence	Ø Tube (mm)	F	F1	A	H	PN (bar)
DA-UMC06LLR1/8C-ZN	6,0	M10X100	1/8"	20,0	11	100



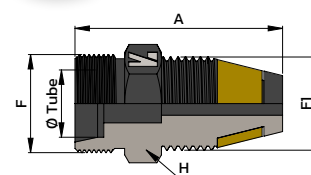
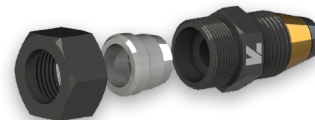
ORFS

BSP

GAZ

CLAPET MALE BSPT COMPLET

Référence	Ø Tube (mm)	F	F1	A	H	PN (bar)
GR-CLO6LLM10C	6,0	M10X100	M10X100	27,0	11	100



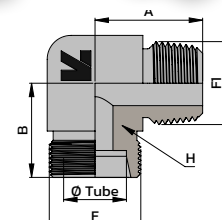
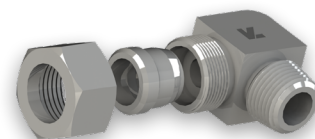
Coupleurs

Vannes Composants

Brides

COUDE MALE BSPT COMPLET

Référence	Ø Tube (mm)	F	F1	A	B	H	PN (bar)
DA-CMC06LLR1/8C-ZN	6,0	M10X100	1/8"	17,0	15,0	11	100



Prises-Pression Manomètres

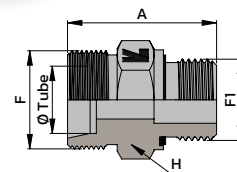
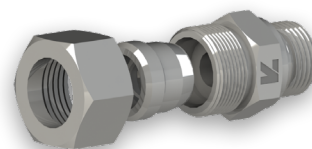
Colliers

Joint

Lavage

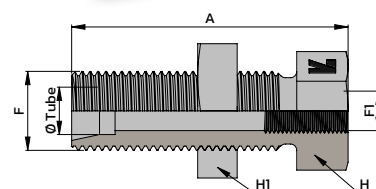
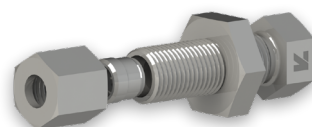
UNION MALE BSPP JE COMPLET

Référence	Ø Tube (mm)	F	F1	A	H	PN (bar)
DA-UM06LLR1/8JEC-Z	6,0	M10X100	1/8"	21,5	14	100



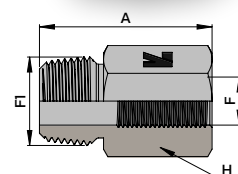
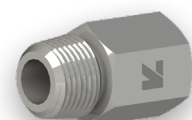
UNION FEMELLE METRIQUE PASSE-CLOISON COMPLET

Référence	Ø Tube (mm)	F	F1	A	H	H1	PN (bar)
GR-UM06LLPCLMF6-ZN	6,0	M10X100	M6X100	35,0	12	17	100



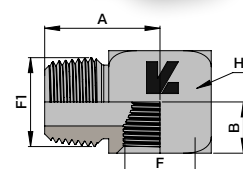
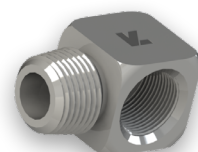
PROLONGATEUR MALE METRIQUE CONIQUE / FEMELLE METRIQUE

Référence	F	F1	A	H	PN (bar)
GR-APMFM8x1CO-ZN	M8X100	M8X100	18,0	12	100
GR-APMFM8x1CO-L30	M8X100	M8X100	28,0	12	100
GR-APMFM8125CO-L30	M8X125	M8X125	28,0	12	100
GR-APMFM10X1CO-ZN	M10X100	M10X100	18,0	13	100
GR-APMFM10X1CO-L25	M10X100	M10X100	25,0	13	100
GR-APMFM10X1CO-L35	M10X100	M10X100	35,0	13	100
GR-APMFM10X1CO-L50	M10X100	M10X100	50,0	13	100
GR-APMFM10X1COL100	M10X100	M10X100	100,0	13	100
GR-APMFM10X1COL150	M10X100	M10X100	150,0	13	100



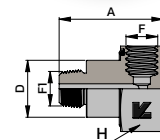
COUDE MALE METRIQUE CONIQUE / FEMELLE METRIQUE

Référence	F	F1	A	B	H	PN (bar)
GR-CMFM1010CO-ZN	M10X100	M10X100	17,5	6,5	13	100

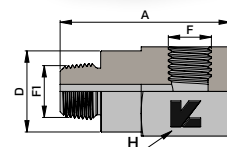
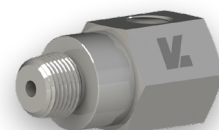


COUDE DEPORTE MALE METRIQUE CONIQUE / FEMELLE METRIQUE

Référence	F	F1	A	H	D	O'ring	PN (bar)
GR-CMFM1010CO-ZNM1	M10X100	M10X100	39,0	30	20,0	Ø23,52X1,78	100

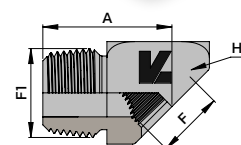
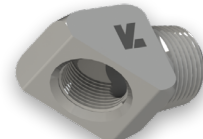


Référence	F	F1	A	H	D	PN (bar)
GR-CMFM1010CO-ZNM2	M10X100	M10X100	42,0	22	20,0	100
GR-CMFM1010CO-ZNM3	M10X100	M10X100	50,0	24	23,7	100



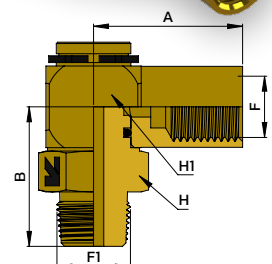
COUDE 45° MALE METRIQUE CONIQUE / FEMELLE METRIQUE

Référence	F	F1	A	H	PN (bar)
GR-C45MFM1010CO-ZN	M10X100	M10X100	19,0	13	100



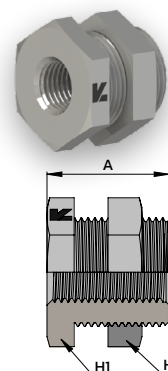
COUDE ORIENTABLE FEMELLE BSPP / MALE CONIQUE

Référence	F	F1	A	B	H	H1	PN (bar)
GR-BJ1/8KFM10L-SP	1/8"	M10X100	20,5	21,9	15	14	100
GR-BJ1/8KFG02L-SP	1/8"	1/8"	20,5	21,9	15	14	100



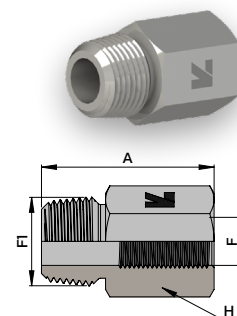
REDUCTION COURTE PASSE-CLOISON MALE METRIQUE / FEMELLE BSPP

Référence	F	F1	A	H	H1	PN (bar)
GR-ARMFCM1602-PCL	M16X150	1/8"	18,0	19	19	100



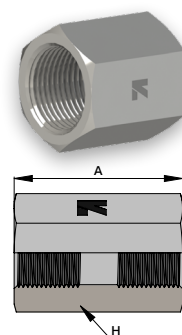
PROLONGATEUR MALE BSPT / FEMELLE METRIQUE

Référence	F	F1	A	H	PN (bar)
GR-AMFKM0410-ZN	M10X100	1/4"	24,0	14	100



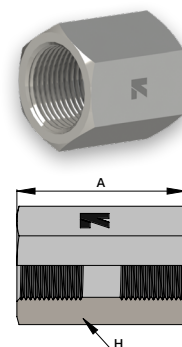
MANCHON FEMELLE METRIQUE

Référence	F	A	H	PN (bar)
GR-APFFM1010-ZN	M10X100	25,0	14	280



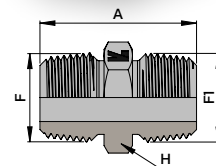
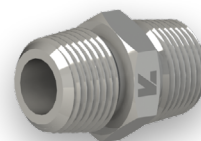
MANCHON FEMELLE BSPP

Référence	F	A	H	PN (bar)
GR-APFFG0202-ZN	1/8"	23,0	14	280



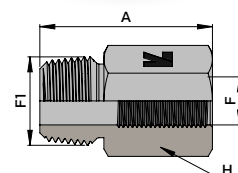
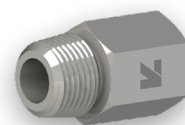
UNION DOUBLE BSPT

Référence	F	F1	A	H	PN (bar)
GR-ANKK0202-ZN	1/8"	1/8"	21,0	11	100



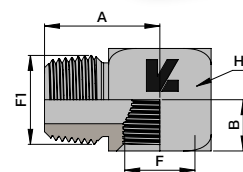
PROLONGATEUR MALE BSPT / FEMELLE BSPP

Référence	F	F1	A	H	PN (bar)
GR-APMFG02CO-ZN	1/8"	1/8"	18,0	13	100



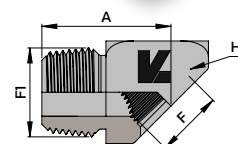
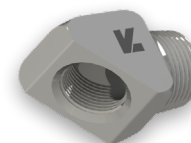
COUDE MALE BSPT / FEMELLE BSPP

Référence	F	F1	A	B	H	PN (bar)
GR-CMF0202CO-ZN	1/8"	1/8"	17,5	6,5	13	100



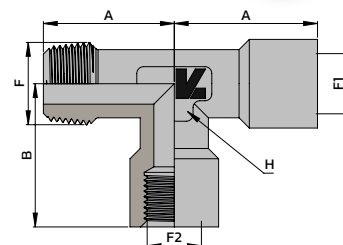
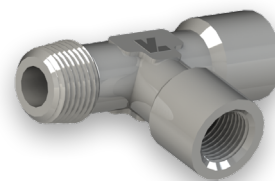
COUDE 45° MALE BSPT / FEMELLE BSPP

Référence	F	F1	A	H	PN (bar)
GR-C45MF0202CO-ZN	1/8"	1/8"	19,0	13	100



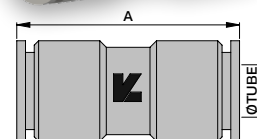
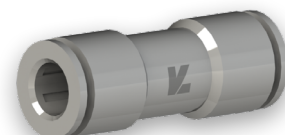
TE RENVERSE FEMELLE BSPP / MALE BSPT

Référence	F	F1	F2	A	B	H	PN (bar)
GR-TFMRO2-ZN	1/8"	1/8"	1/8"	39,5	21,0	10	100



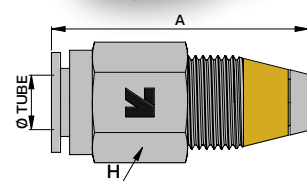
UNION DOUBLE ENCLIQUETABLE

Référence	A	Ø Tube (mm)	PN (bar)
GR-UDEN06	33,0	6,0	200



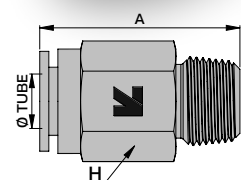
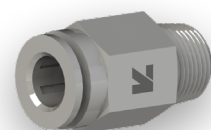
CLAPET ENCLIQUETABLE

Référence	F	A	Ø Tube (mm)	H	PN (bar)
GR-CLEN06M10	M10X100	37,0	6,0	12	200



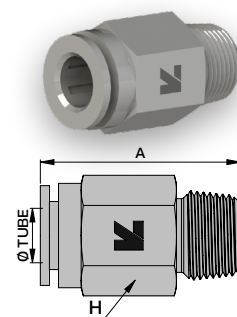
ADAPTATEUR ENCLIQUETABLE / MALE METRIQUE CONIQUE

Référence	F	A	Ø Tube (mm)	H	PN (bar)
GR-UMEN04M06CO	M6X100	24,5	4,0	8	200
GR-UMEN04M10CO	M10X100	19,7	4,0	12	200
GR-UMEN06M06CO	M6X100	27,0	6,0	12	200
GR-UMEN06M08CO	M8X100	28,0	6,0	12	200
GR-UMEN06M10CO	M10X100	24,0	6,0	12	200



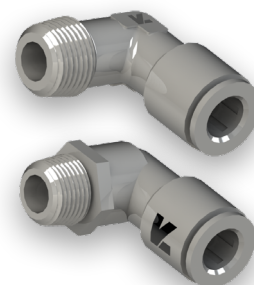
ADAPTATEUR ENCLIQUETABLE / MALE BSPT

Référence	F	A	Ø Tube (mm)	H	PN (bar)
GR-UMEN06R1/8CO	1/8"	22,6	6,0	12	200



COUDE ENCLIQUETABLE / MALE METRIQUE CONIQUE

Référence	F	A	B	Ø Tube (mm)	H	PN (bar)
GR-CEN04M06CO	M6X100	20,5	14,5	4,0	8	200
GR-CEN04M10CO	M10X100	20,5	17,6	4,0	8	200
GR-CEN06M06CO	M6X100	24,1	16,5	6,0	10	200
GR-CEN06M06CO-RO*	M6X100	26,2	24,8	6,0	10	200
GR-CEN06M08CO	M8X100	24,1	16,5	6,0	10	200
GR-CEN06M08CO-RO*	M8X100	26,2	24,5	6,0	10	200
GR-CEN06M10CO	M10X100	24,1	17,5	6,0	10	200
GR-CEN06M10CO-RO*	M10X100	26,2	24,0	6,0	10	200

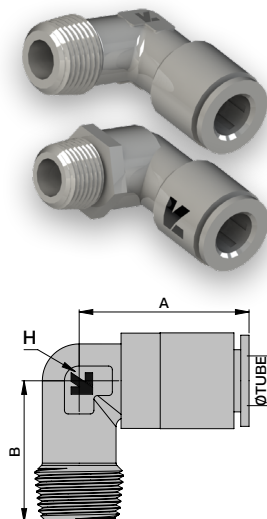


* Rotatif

COUDE ENCLIQUETABLE / MALE BSPT

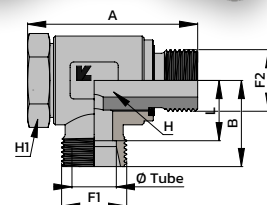
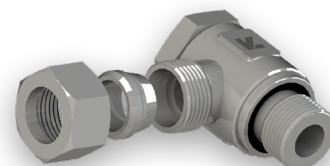
Référence	F	A	B	Ø Tube (mm)	PN (bar)
GR-CEN06R1/8CO	1/8"	24,1	17,5	6,0	200
GR-CEN06R1/8CO-RO*	1/8"	24,1	23,4	6,0	200

* Rotatif



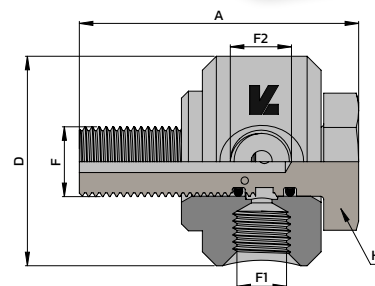
BANJO BSPP JE COMPLET / SERIE LL

Référence	Ø Tube (mm)	F1	F1	A	B	L	H	H1	PN (bar)
DA-BJE06LLR1/8C-ZN	6LL	M10X100	1/8"	26,5	18,0	12,5	17	17	100



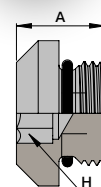
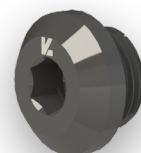
BANJO SPECIAL GRAISSAGE

Référence	F	F1	F2	A	D	H	PN (bar)
GR-BJ10X100-SP	M10X100	1/8"	M10X100	35,0	30	17	100
GR-BJ1/8-SP	1/8"	1/8"	M10X100	35,0	30	17	100



BOUCHON MALE ISO

Référence	F	A	H	PN (bar)
GR-BM10X100ISO	M10X100	8,5	5,0	100



COFFRET RACCORDS GRAISSAGE

Référence	L (mm)	l (mm)	H (mm)	Emplacement
COF-GR-RACCORD	380,0	310,0	70	23
COF-23-VIDE*	380,0	310,0	70	23

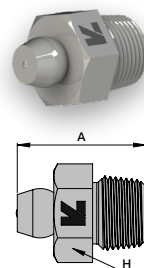
* = COFFRET NU

Référence	Quantité
GR-RB03-ZN	20
GR-RPDLO306-ZN	10
GR-RP45LO306-ZN	5
GR-RP90LO306-ZN	10
DA-UMCO6LLM06C-ZN	10
DA-CMCO6LLM06C-ZN	5
GR-UM06LLPCLMF6-ZN	5
GR-CLO6LLM10C	5
DA-UMCO6LLM08C-ZN	10
DA-CMCO6LLM08C-ZN	5
DA-UD06LLC-ZN	5
DA-CE06LLC-ZN	5
DA-UMCO6LLR1/8C-ZN	10
DA-CMCO6LLR1/8C-ZN	5
GR-APMFG02CO-ZN	10
GR-CMF0202CO-ZN	10
GR-C45MF0202CO-ZN	5
GR-BM10X100ISO	20
GR-C45MFM1010CO-ZN	5
GR-CMFM1010CO-ZN	10
GR-APMFM10X1CO-ZN	10
GR-BLOC2-10X100-ZN	1
GR-BLOC4-10X100-ZN	1
GR-PINCE	1
GR-BJ1/8KFM10L-SP	3



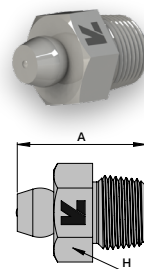
GRAISSEUR METRIQUE CONIQUE

Référence	F	A	H
GR-GRM06CO	M6X100	15,0	7
GR-GRM08CO	M8X100	15,0	9
GR-GRM08125CO	M8X125	15,0	9
GR-GRM10CO	M10X100	15,0	11
GR-GRM10150CO	M10X150	15,0	11



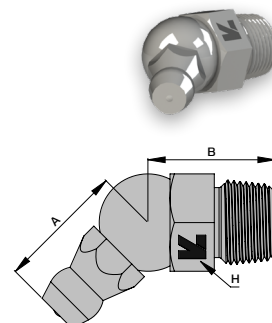
GRAISSEUR METRIQUE CONIQUE AUTO-TARAUDANT

Référence	F	A	H
GR-GRM06CO-ATT	M6X100	15,0	7
GR-GRM08CO-ATT	M8X100	15,0	9



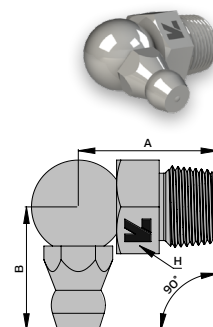
GRAISSEUR 45° METRIQUE CONIQUE

Référence	F	A	B	H
GR-GR45M06CO	M6X100	13,0	13,0	9
GR-GR45M08CO	M8X100	13,0	13,0	9
GR-GR45M08125CO	M8X125	13,0	13,0	9
GR-GR45M10CO	M10X100	13,0	14,0	11
GR-GR45M10150CO	M10X150	15,0	14,0	11



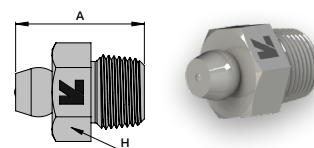
GRAISSEUR 90° METRIQUE CONIQUE

Référence	F	A	B	H
GR-GR90M06CO	M6X100	13,0	13,0	9
GR-GR90M08CO	M8X100	13,0	13,0	9
GR-GR90M08125CO	M8X125	13,0	13,0	9
GR-GR90M10CO	M10X100	15,0	15,0	11



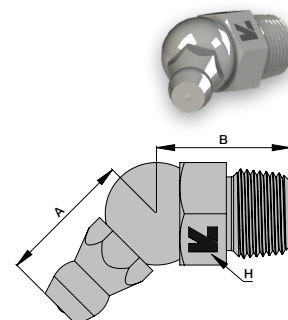
GRAISSEUR BSPT

Référence	F	A	H
GR-GRMC02	1/8"	15,0	11
GR-GRMC04	1/4"	17,5	14



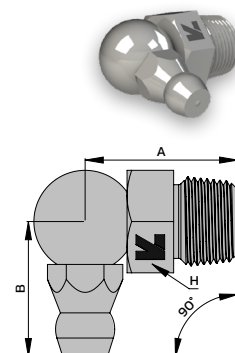
GRAISSEUR 45° BSPT

Référence	F	A	B	H
GR-GR45MC02	1/8"	13,0	16,5	11
GR-GR45MC04	1/4"	13,0	18,5	14



GRAISSEUR 90° BSPT

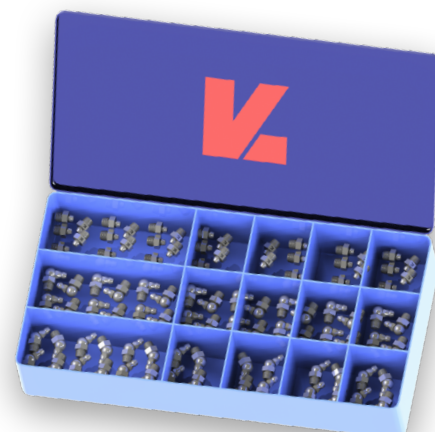
Référence	F	A	B	H
GR-GR90MC02	1/8"	17,0	14,0	11
GR-GR90MC04	1/4"	19,0	14,0	14



COFFRET DE GRAISSEURS - 160 PCES

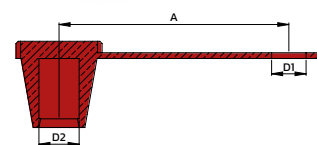
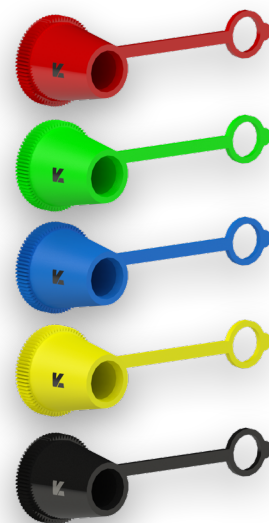
Référence	L (mm)	l (mm)	H (mm)	Emplacement
COF-GR-GRAISSEUR	230,0	120,0	45	15

Référence	Quantité	Référence	Quantité
GR-GRM06CO	40	GR-GR45M10CO	5
GR-GRM08CO	30	GR-GR45M08125CO	5
GR-GRM10CO	20	GR-GR45M10150CO	5
GR-GRM08125CO	10	GR-GR90M06CO	5
GR-GRMC04	10	GR-GR90M08CO	5
GR-GRM10150CO	5	GR-GR90M10CO	5
GR-GR45M06CO	5	GR-GR90M08125CO	5
GR-GR45M08CO	5		



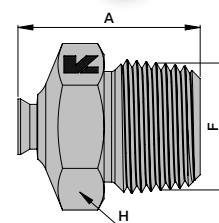
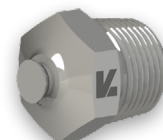
BOUCHON DE GRAISSEUR

Référence	Couleur	Matière	A	D1	D2
GR-BPGRR	Rouge	PE	29,0	6,3	5,7
GR-BPGRV	Vert	PE	29,0	6,3	5,7
GR-BPGRB	Bleu	PE	29,0	6,3	5,7
GR-BPGRJ	Jaune	PE	29,0	6,3	5,7
GR-BPGRN	Noir	PE	29,0	6,3	5,7



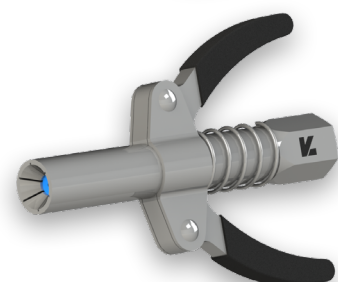
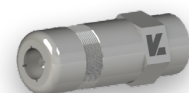
SOUPAPE DE DECHARGE

Référence	F	A	H	Tarage (Bar)
GR-SDD02CO	1/8"	14	11	3



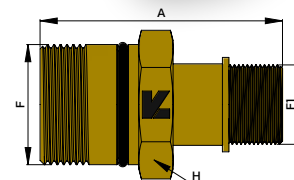
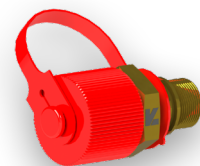
AGRAFE

Référence	F
GR-AGRAFEM10	M10X100
GR-AGRAFSECUM10	M10X100



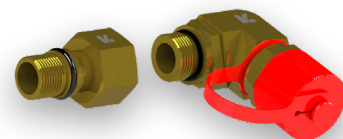
ADAPTATEUR REMPLISSAGE / GRAISSAGE CENTRALISE

Référence	F	F1	A	H	PN (bar)
GR-GMINI-ADREM	M28X200	M20X150	56,5	30	200
GR-G3-ADREM	M28X200	3/4" UNF	61,5	30	200

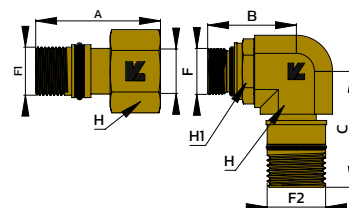


ADAPTATEUR 90° REMPLISSAGE / GRAISSAGE CENTRALISE

Référence	F	F1	A	H	PN (bar)
GR-GMINI-AMFDREM	M22X150	M20X150	47,0	30	200
GR-G3-AMFDREM	M22X150	3/4" UNF	52,0	30	200



Référence	F	F2	B	C	H	H1	PN (bar)
GR-CMREM	M22X150	M28X200	42,5	55,5	30	27	200

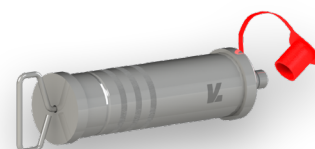


SERINGUE DE REMPLISSAGE

Référence

GR-SDREM

Pour cartouche de graisse Ø 53 x Lg 240 mm
Vendue sans graisse

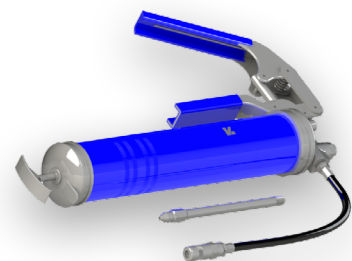


POMPE A GRAISSE 1 MAIN

Référence

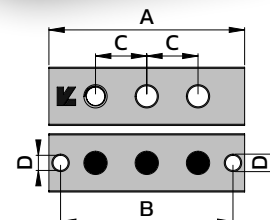
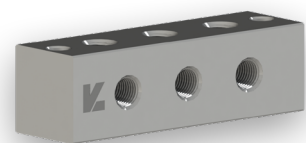
GR-PUMP1H

Pour cartouche de graisse Ø 53 x Lg 240 mm
Vendue sans graisse



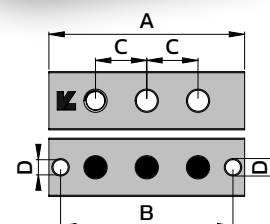
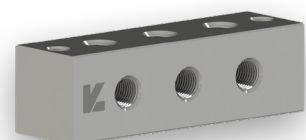
BLOC DISTRIBUTEUR EN "L"

Référence	F	A	B	C	D
GR-BLOC1-10X100-ZN	2X M10X100	30,0			6,5
GR-BLOC2-10X100-ZN	4X M10X100	60,0	50,0	22,0	6,5
GR-BLOC3-10X100-ZN	6X M10X100	84,0	74,0	22,0	6,5
GR-BLOC4-10X100-ZN	8X M10X100	106,0	96,0	22,0	6,5
GR-BLOC5-10X100-ZN	10X M10X100	128,0	118,0	22,0	6,5
GR-BLOC6-10X100-ZN	12X M10X100	150,0	140,0	22,0	6,5
GR-BLOC8-10X100-ZN	16X M10X100	194,0	184,0	22,0	6,5



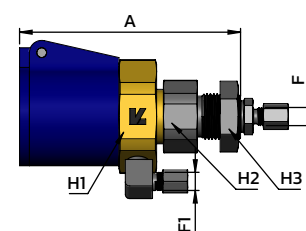
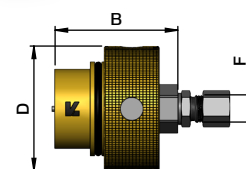
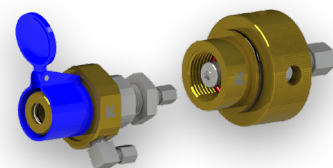
BLOC DISTRIBUTEUR EN "T"

Référence	F	A	B	C	D
GR-BLOC1T-02-ZN	3X 1/8"	30,0			6,5
GR-BLOC2T-02-ZN	6X 1/8"	60,0	50,0	22,0	6,5
GR-BLOC3T-02-ZN	9X 1/8"	84,0	74,0	22,0	6,5
GR-BLOC4T-02-ZN	12X 1/8"	106,0	96,0	22,0	6,5
GR-BLOC5T-02-ZN	15X 1/8"	128,0	118,0	22,0	6,5



COUPLEUR A VISSER SPECIAL GRAISSAGE

Référence	A	B	D	F	F1	H1	H2	H3
GR-CFV02M10	78,5	-	-	O6L - M12X150	6LL - M10X100	46	30	27
GR-CMV02M10	-	51,5	55	O6L - M12X150	-	-	-	-



NOTES

DMH, FOURNISSEUR DE CONNECTIQUE HYDRAULIQUE

Chez DMH France, nous nous engageons à fournir à nos clients les solutions les plus adaptées à leur besoin, grâce à un service efficace et dans les meilleurs délais.

Pour cela, nous avons développé la marque LK Fluid, une gamme complète de connecteurs hydraulique de haute qualité.

Les produits LK Fluid bénéficient d'une capacité de stockage de plus de 5000 m², permettant une forte disponibilité et de faibles délais de livraison.

Ciblant principalement le marché européen, DMH fournit les grands constructeurs ainsi que les spécialistes de la distribution (machines agricoles, poids lourds, industries, etc.).

Nos 20 années d'expérience nous ont permis de construire de forts partenariats avec nos clients, les accompagnant dans leur poursuite d'excellence.

UNE GAMME COMPLETE DE PRODUITS HYDRAULIQUES



DMH ■ Agence de Nantes

6 rue Jupiter 44470 Carquefou FRANCE
T +33 (0)2 40 25 77 27
distribution@dmhfrance.com
oem@dmhfrance.com

DMH ■ Agence de Lyon

5 av. Lionel Terray 69330 Meyzieu FRANCE
T +33 (0)4 37 25 84 50
infolyon@dmhfrance.com

www.dmhfrance.com



DMH France certifiée ISO 9001:2015

